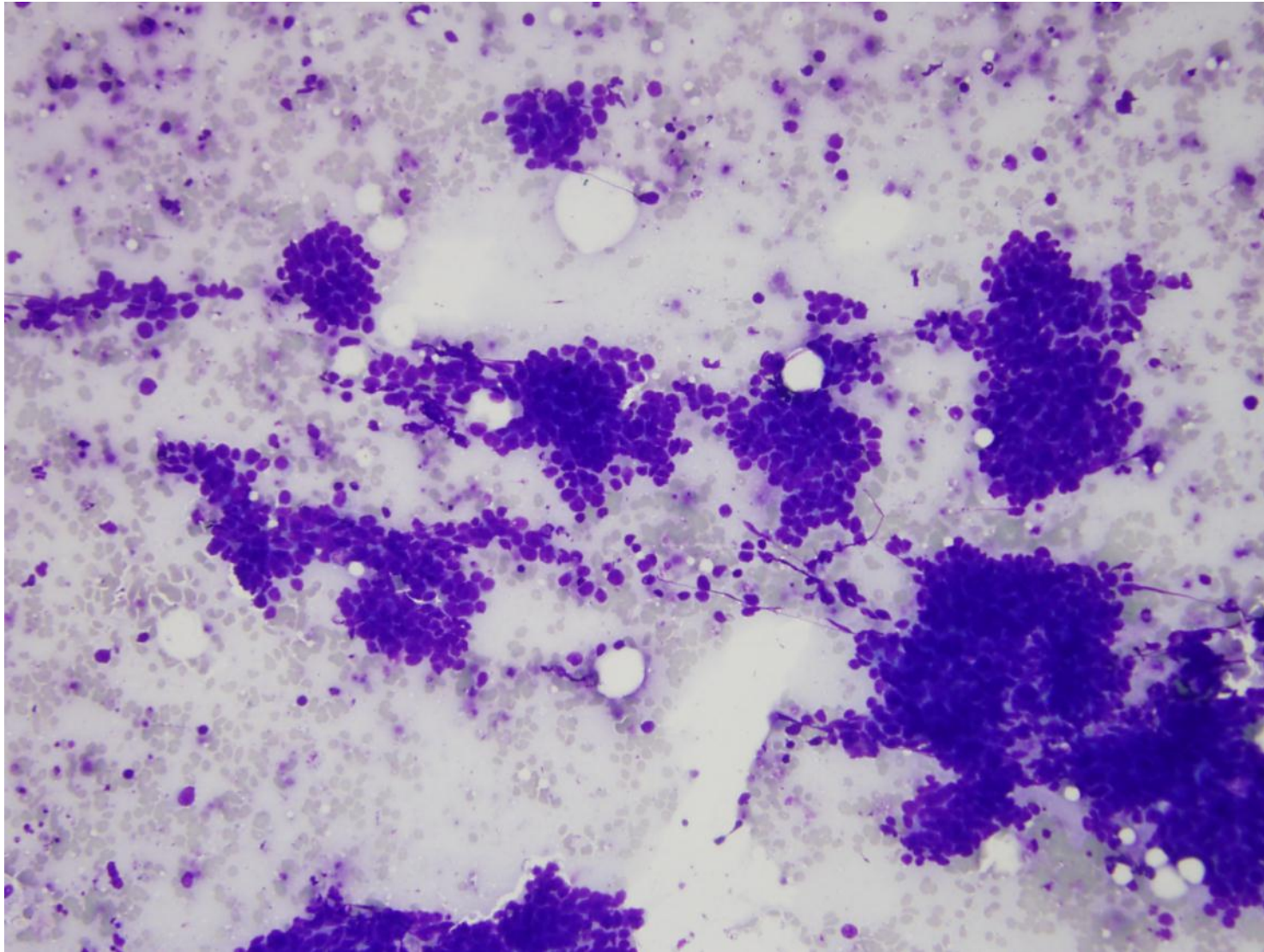
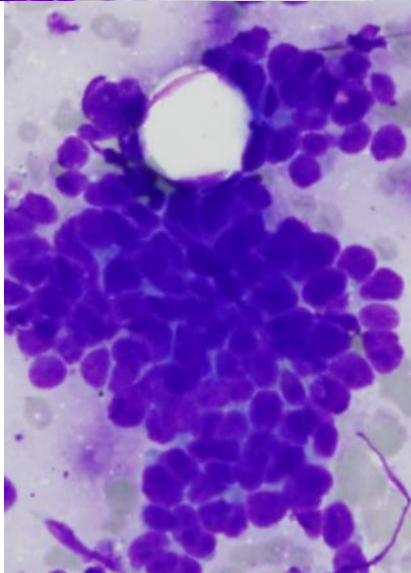
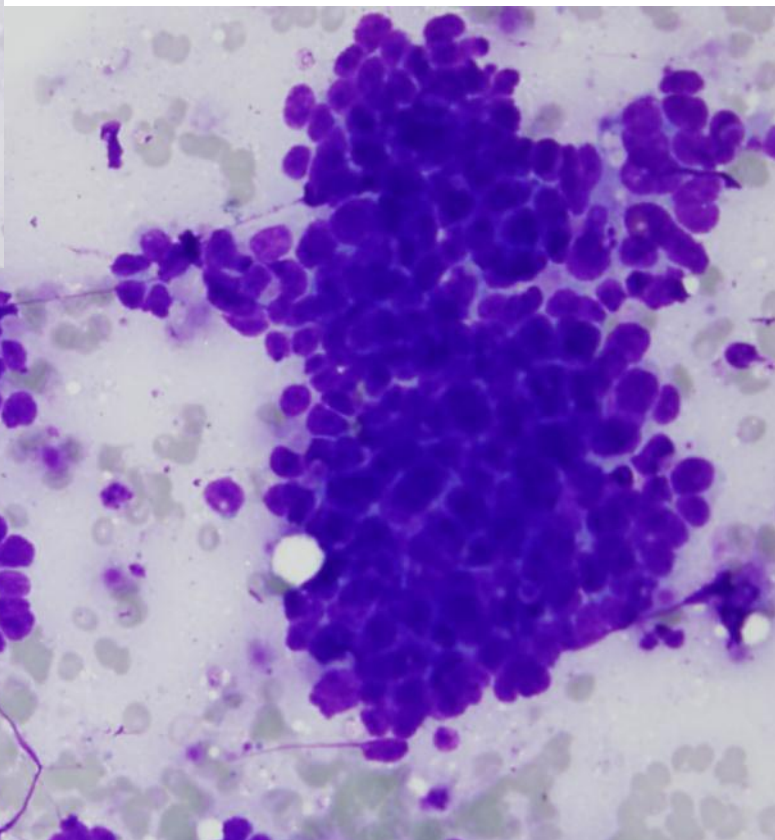
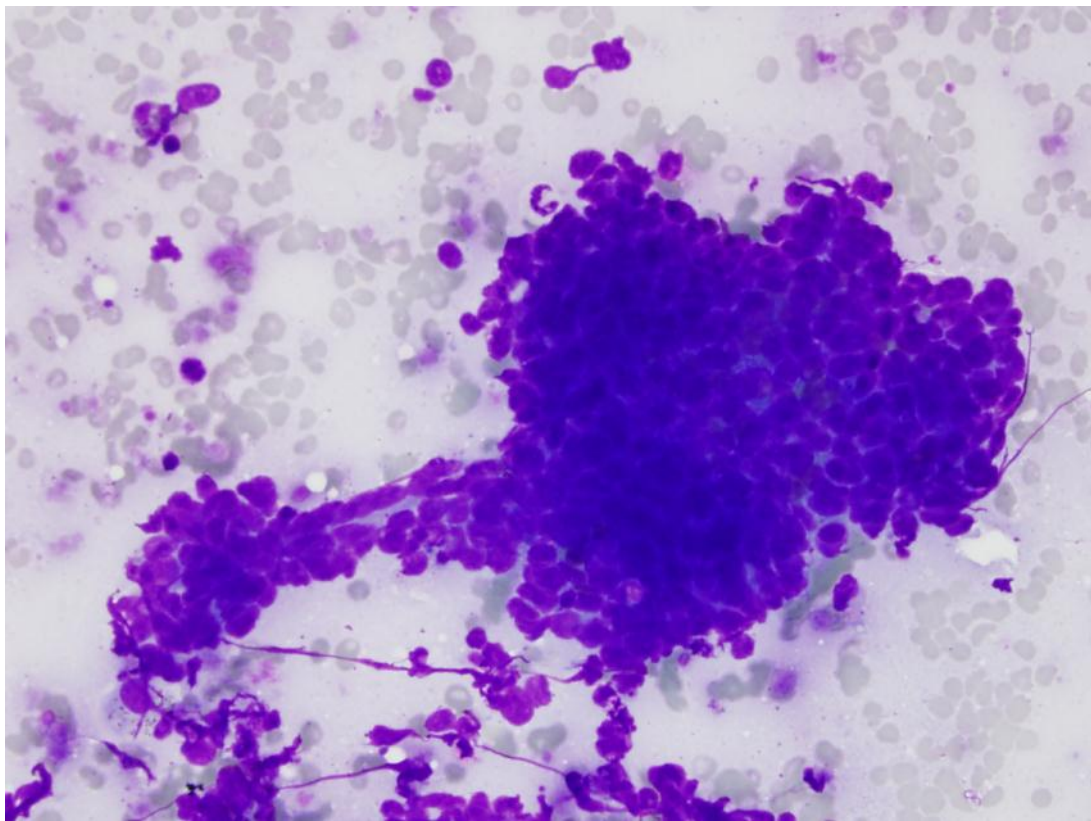
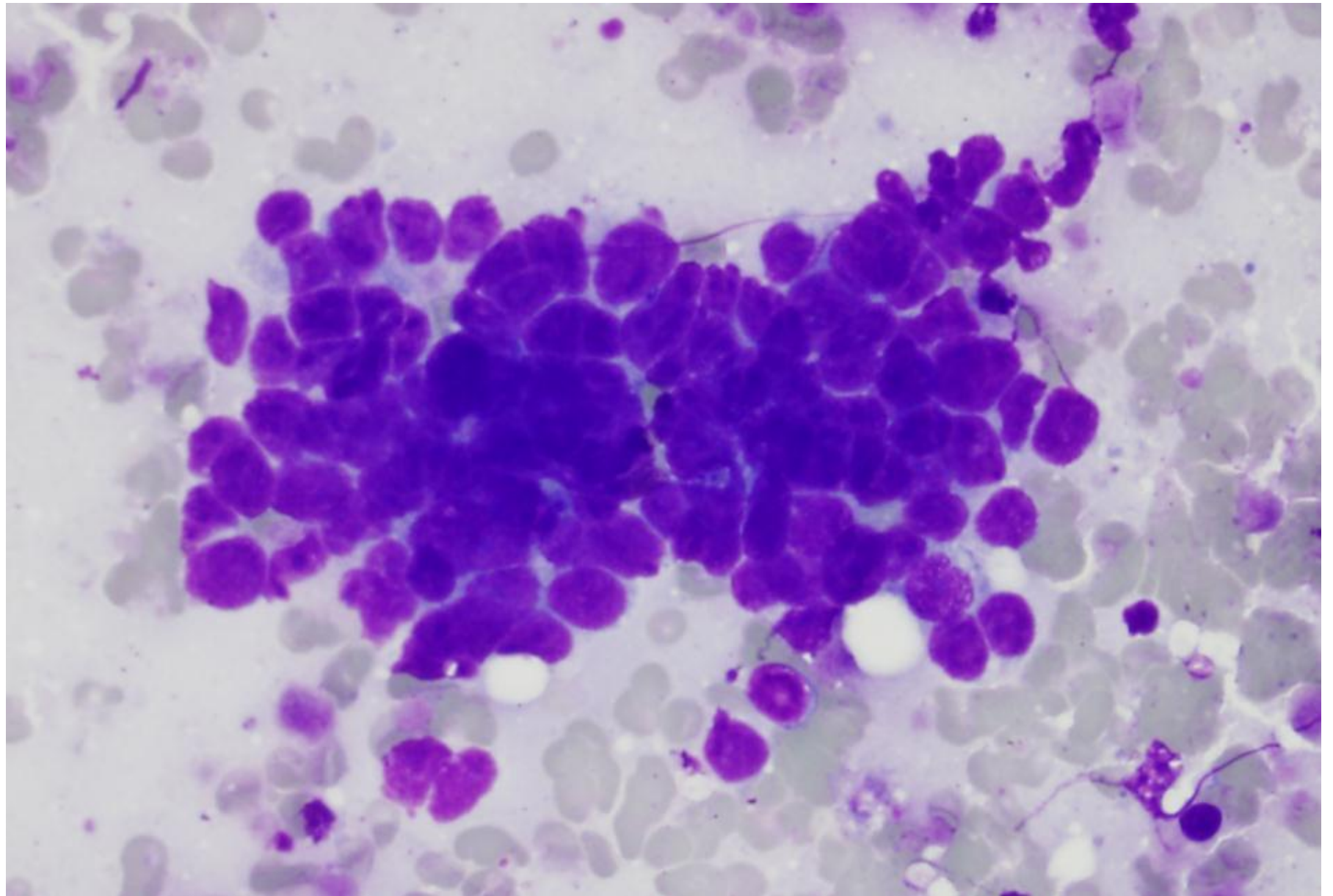


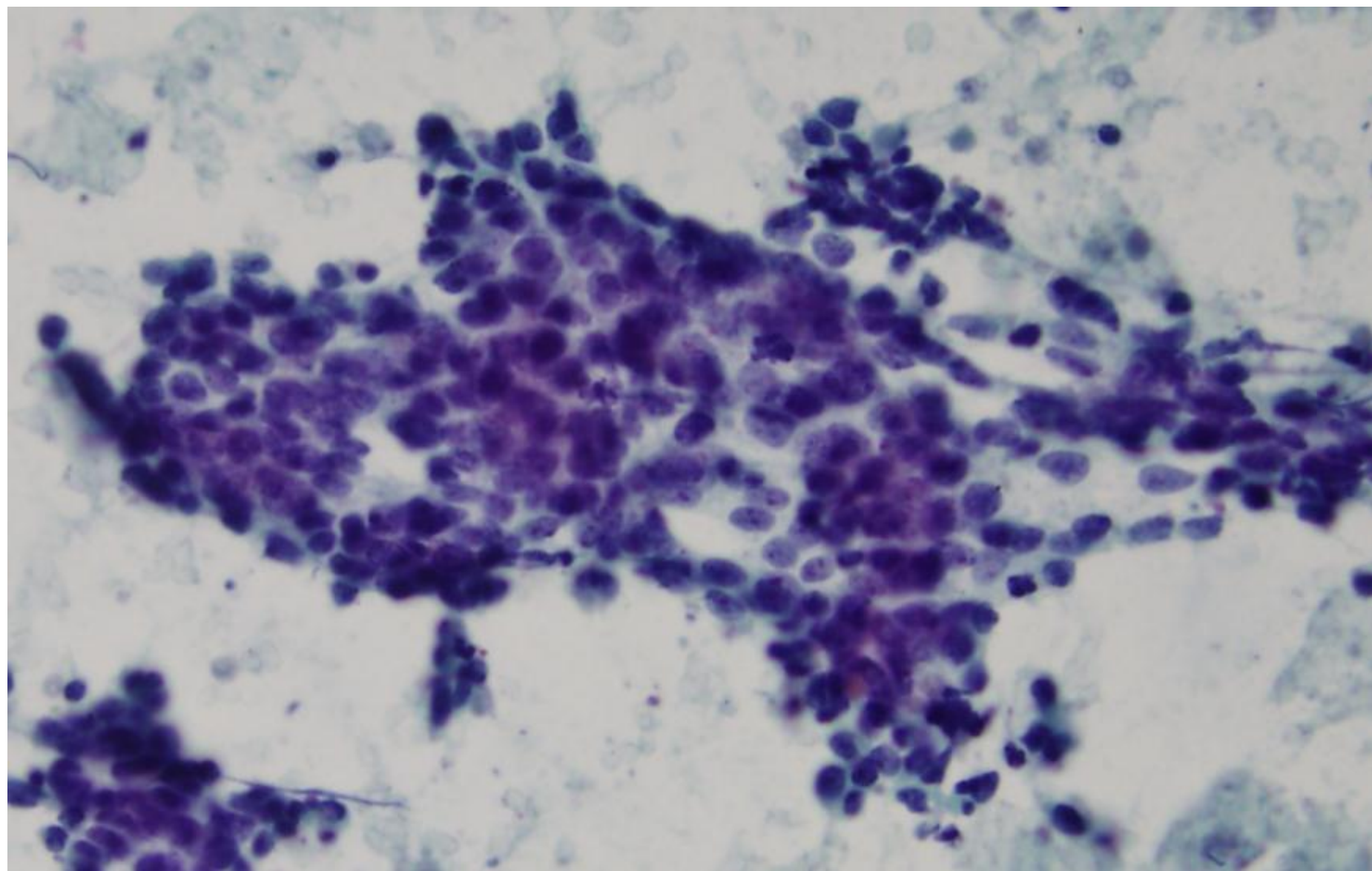
Interesting Case Conference

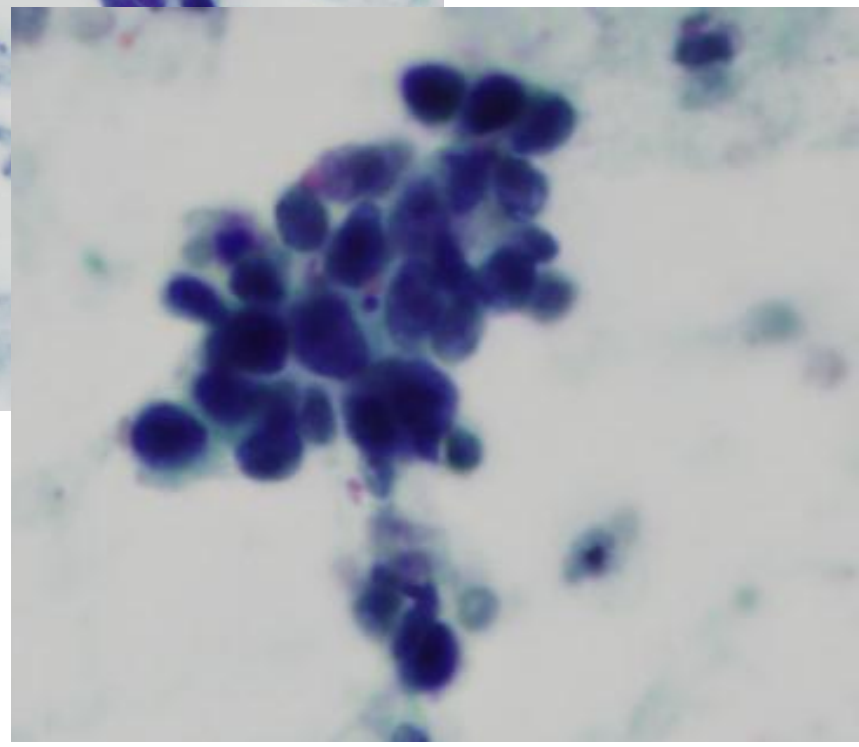
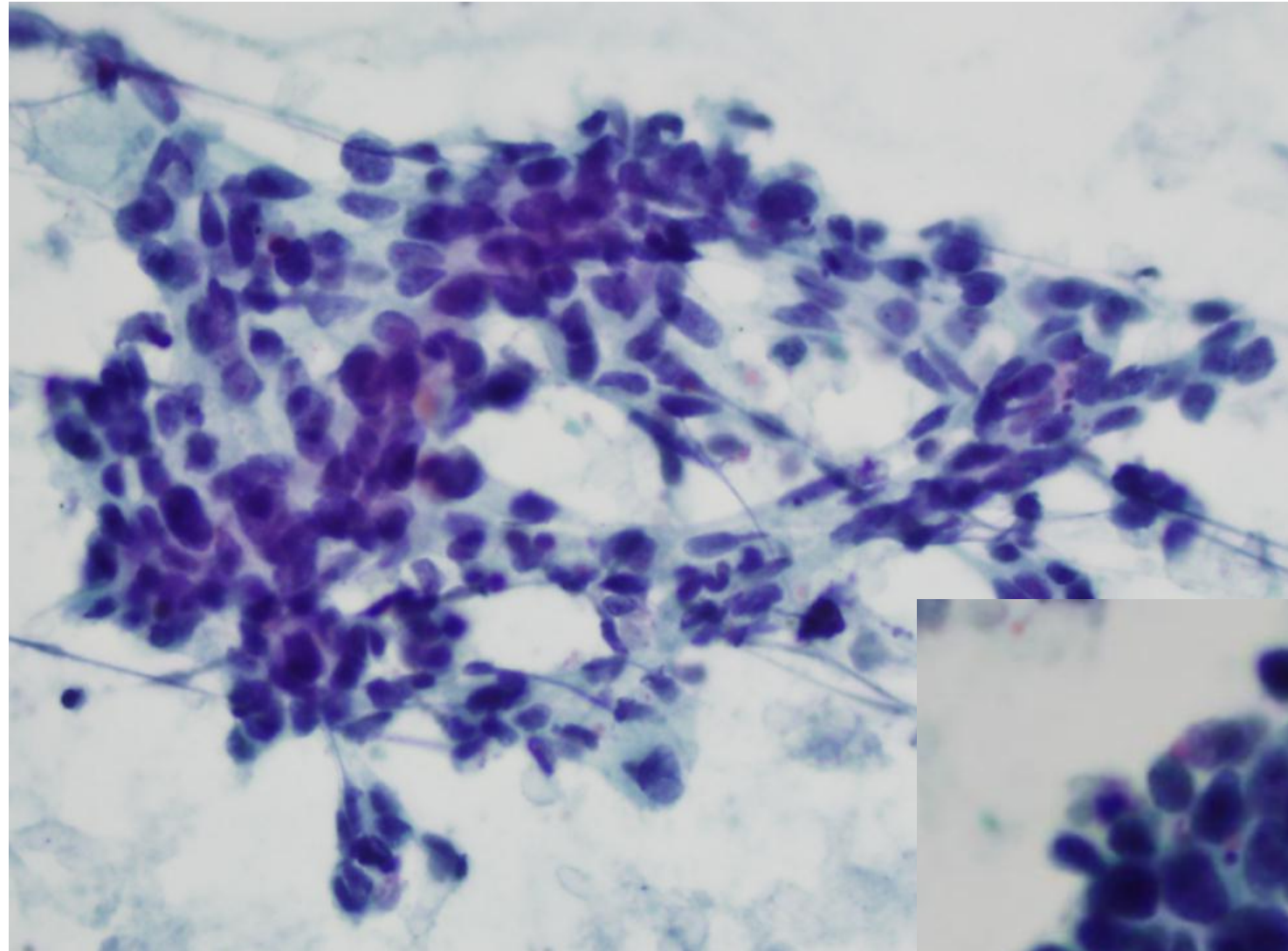
Case #1. 4R lymph node (EBUS-FNA)

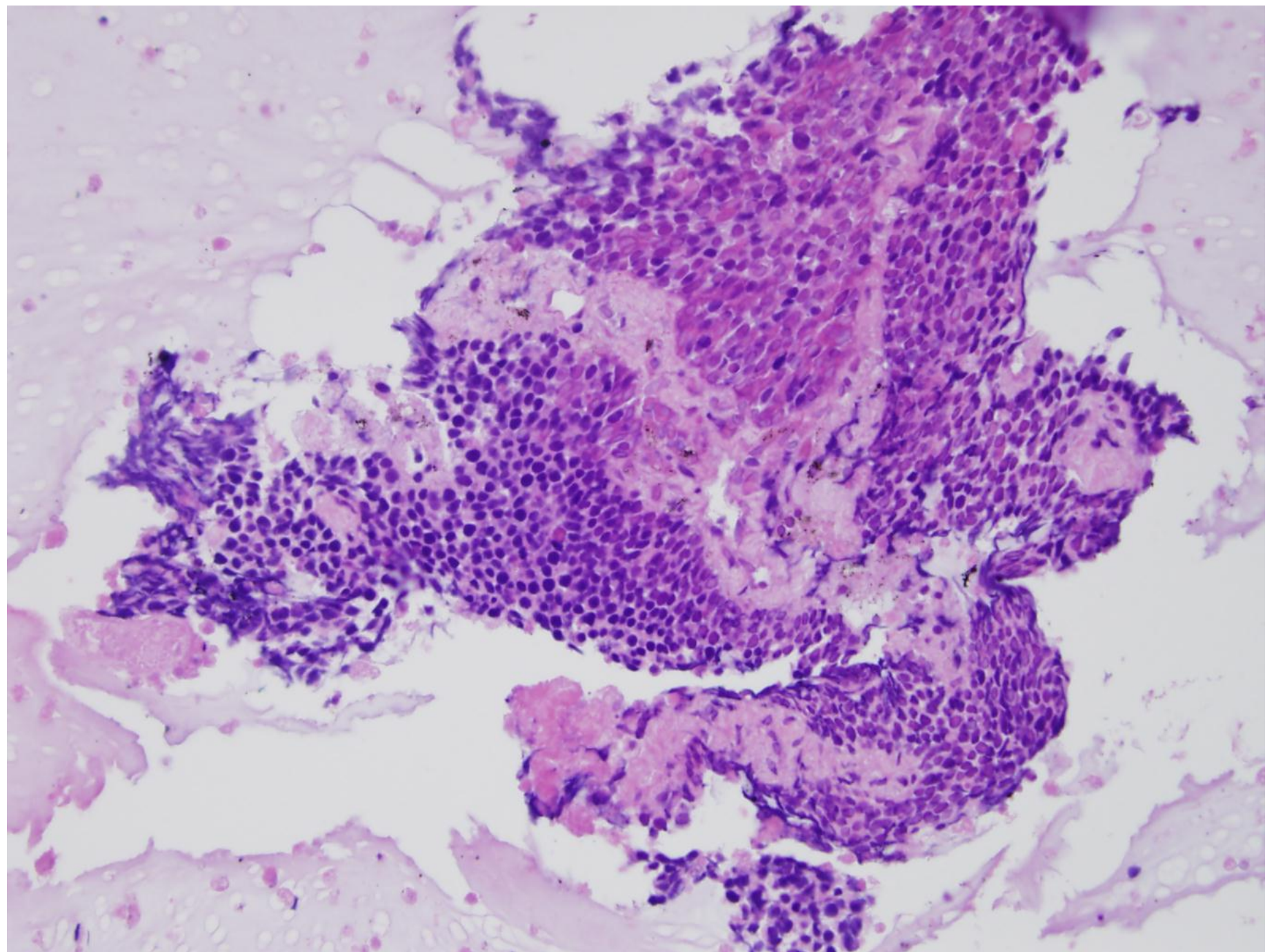


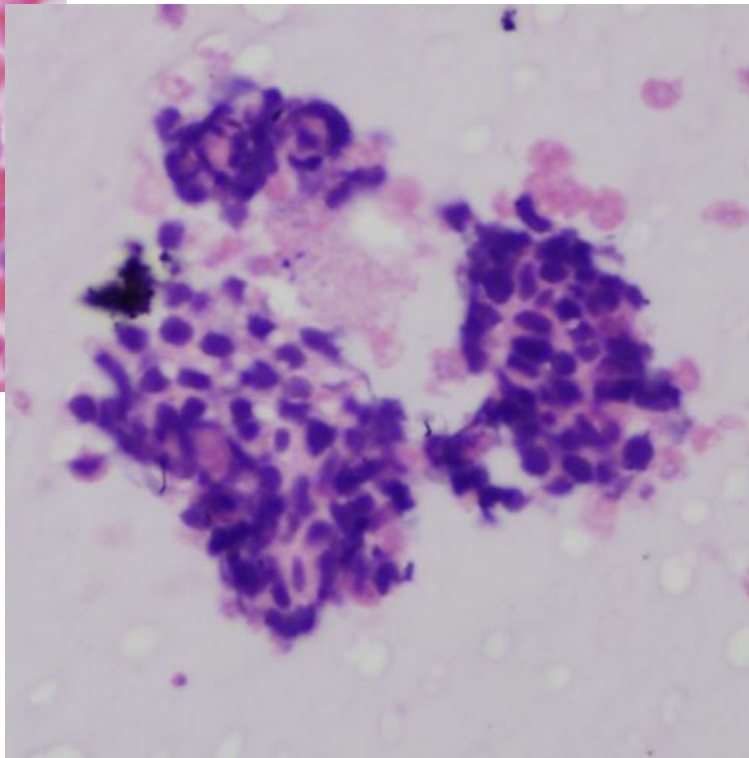
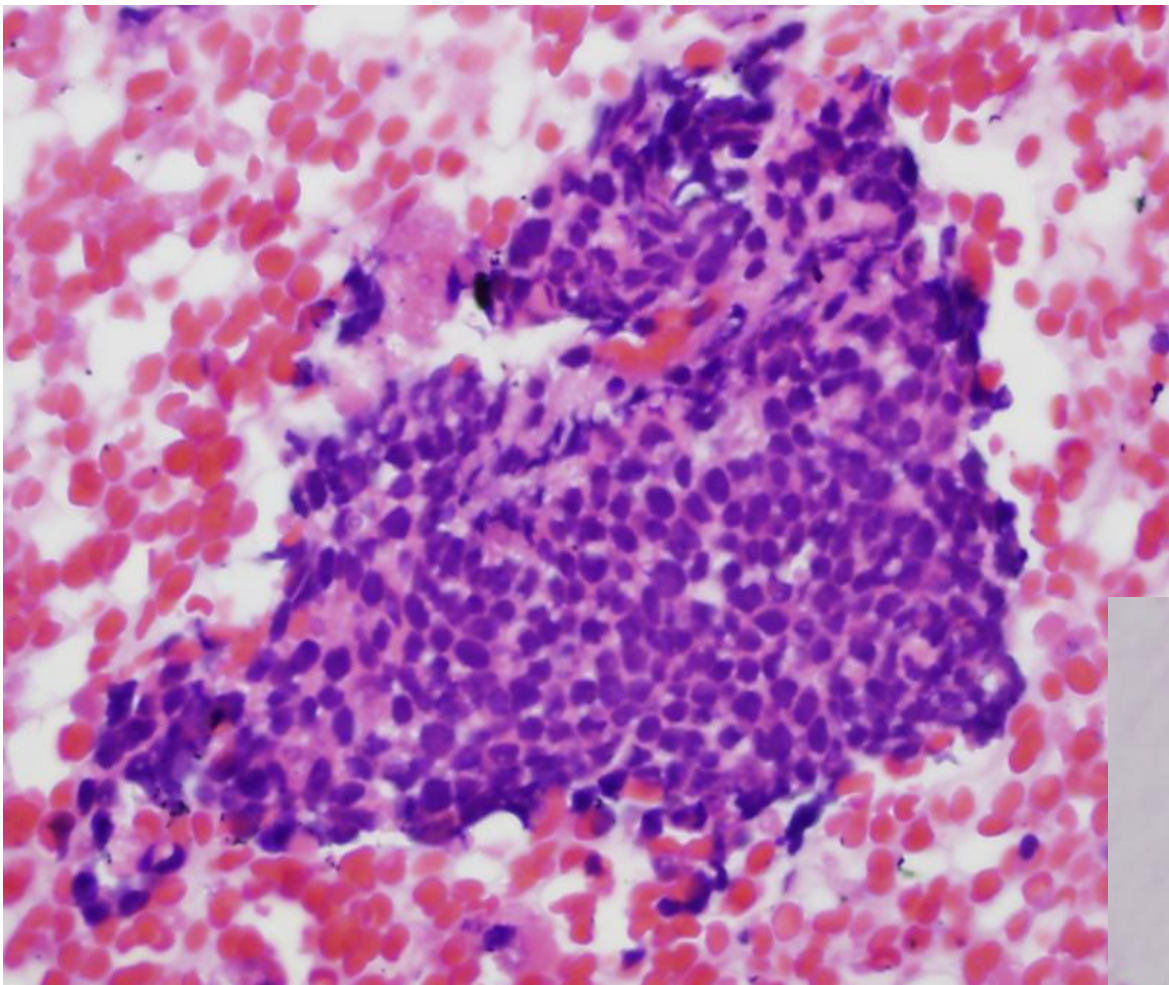












POSITIVE FOR CARCINOMA
DIFFERENTIAL DIAGNOSTIC CONSIDERATIONS

```
graph TD; A[POSITIVE FOR CARCINOMA<br/>DIFFERENTIAL DIAGNOSTIC CONSIDERATIONS] --> B[NEUROENDOCRINE NEOPLASM]; A --> C[NON-SMALL CELL CARCINOMA]; B --> D[ATYPICAL CARCINOID]; B --> E[SMALL CELL CARCINOMA]; C --> F[ADENOCARCINOMA]; C --> G[BASALOID SQUAMOUS CELL CARCINOMA];
```

NEUROENDOCRINE NEOPLASM

NON-SMALL CELL CARCINOMA

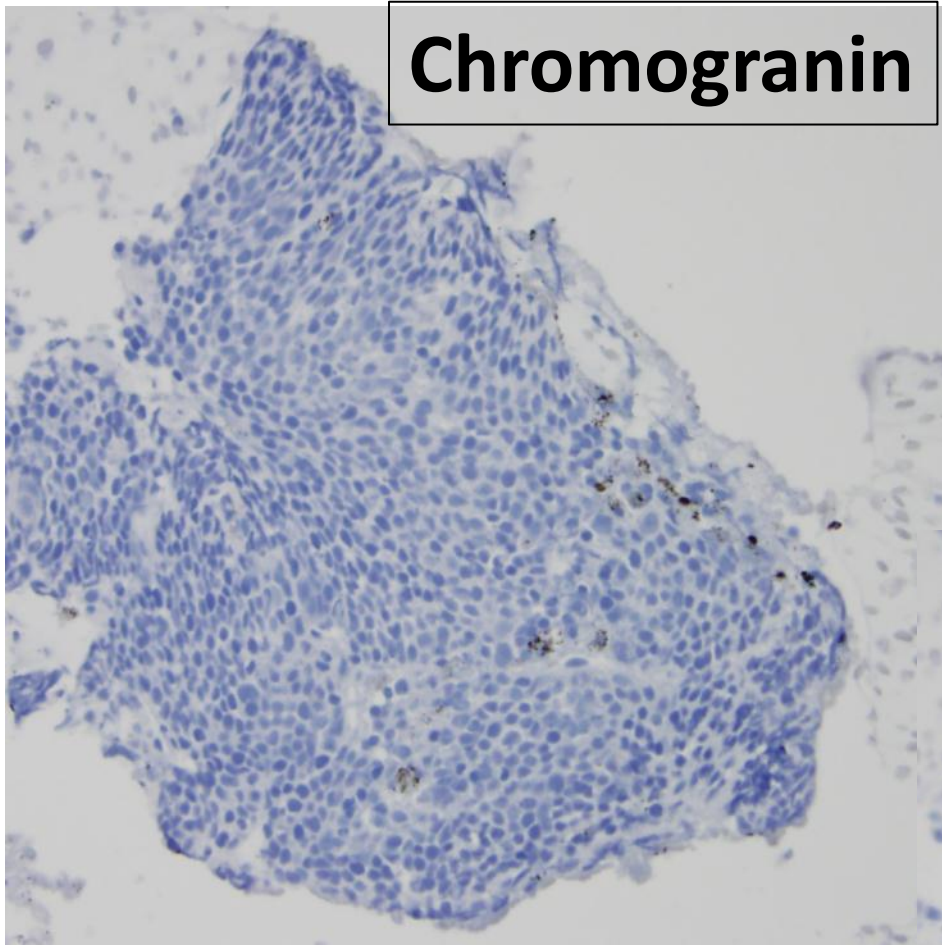
ATYPICAL
CARCINOID

SMALL CELL
CARCINOMA

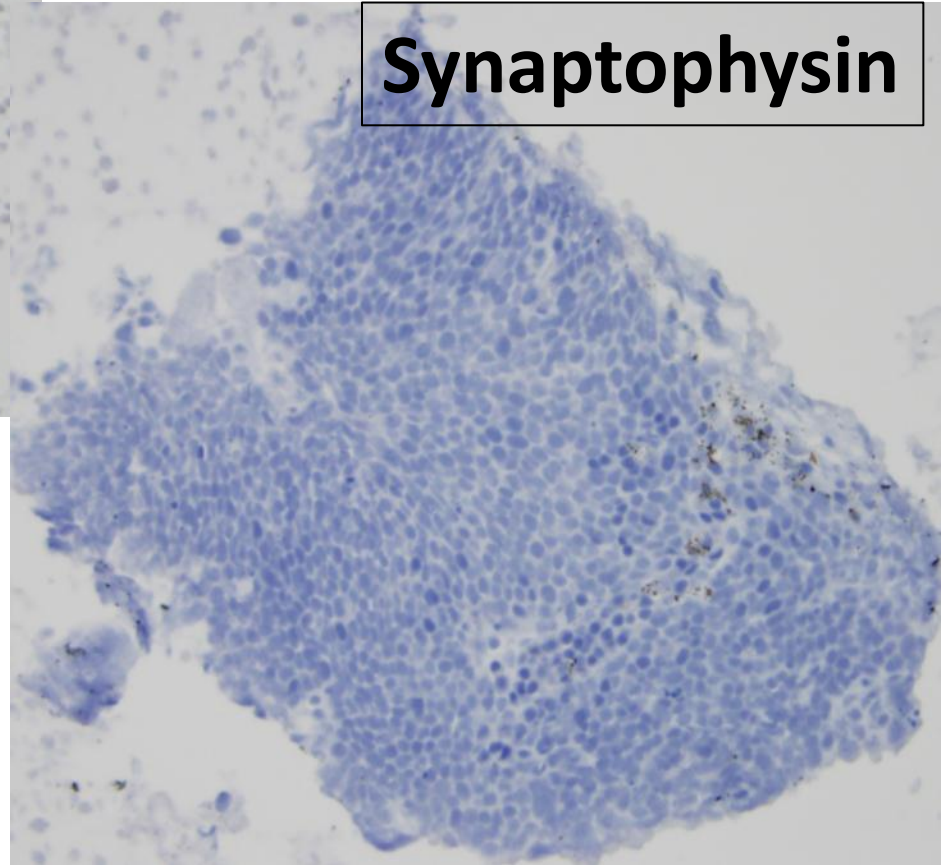
ADENOCARCINOMA

BASALOID SQUAMOUS
CELL CARCINOMA

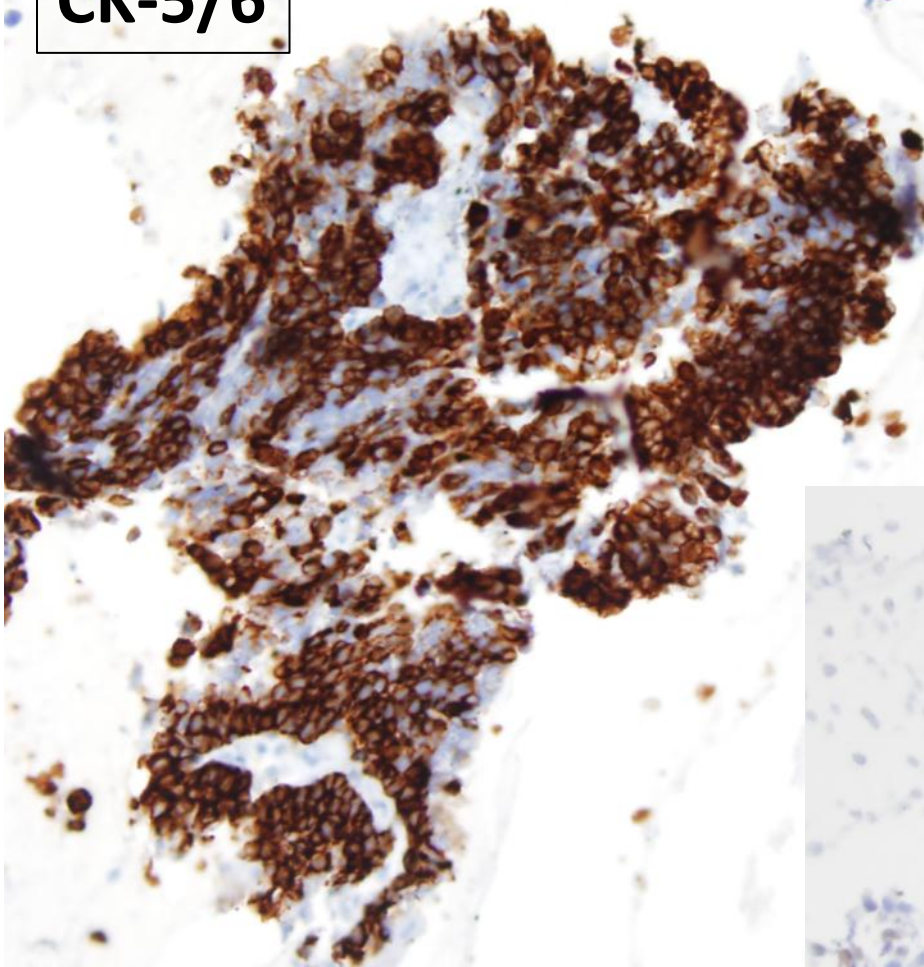
Chromogranin



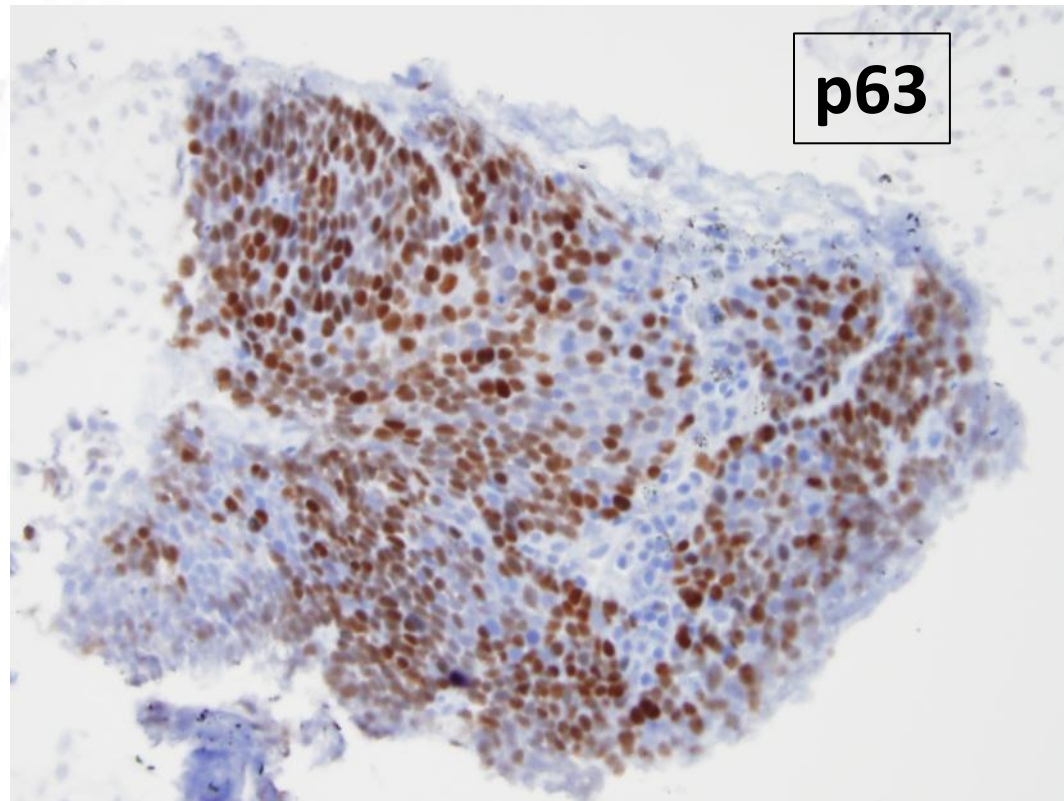
Synaptophysin



CK-5/6



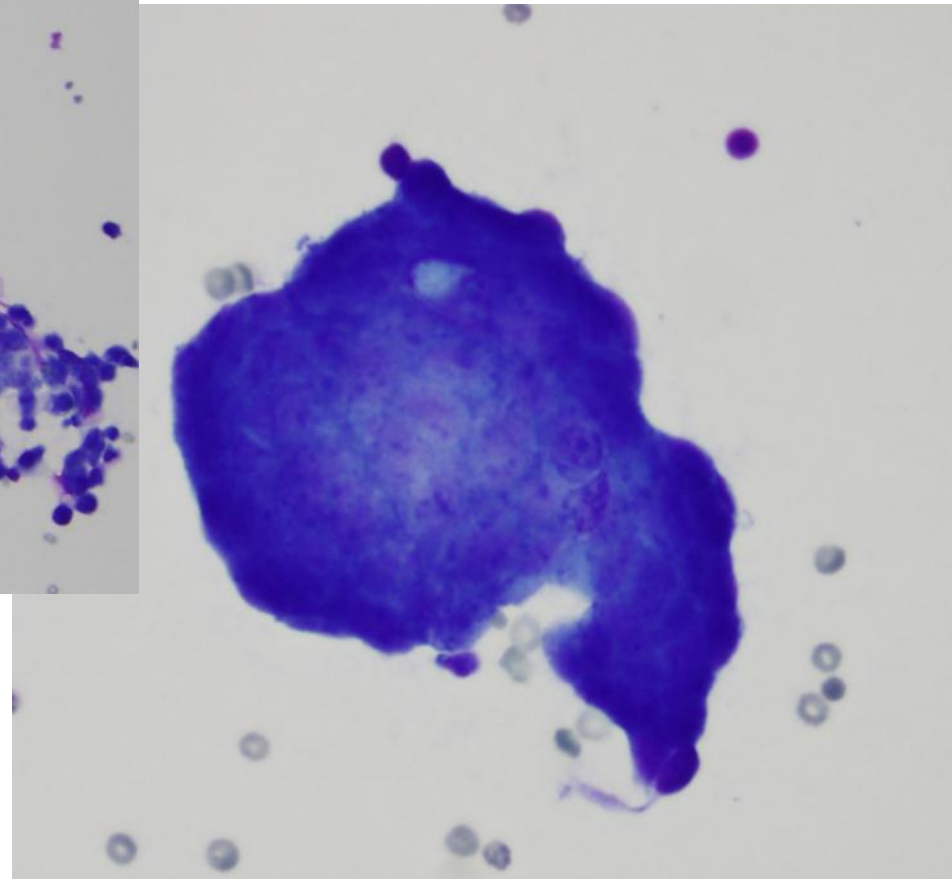
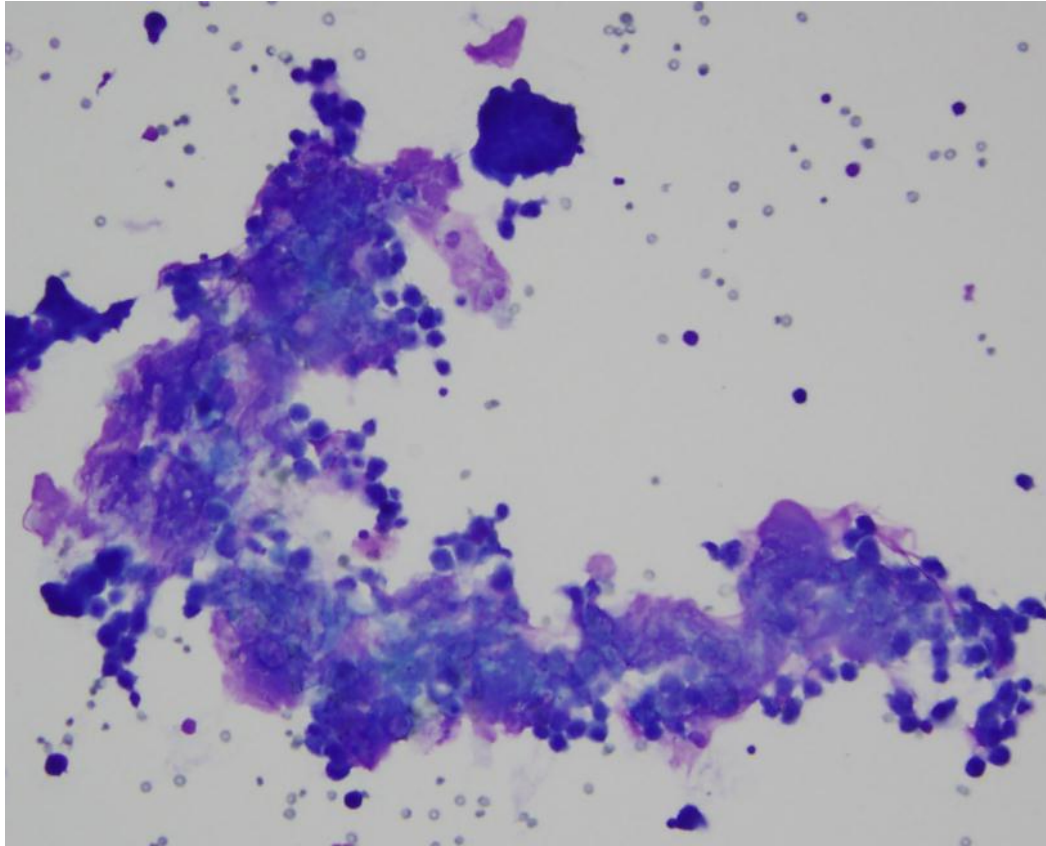
p63

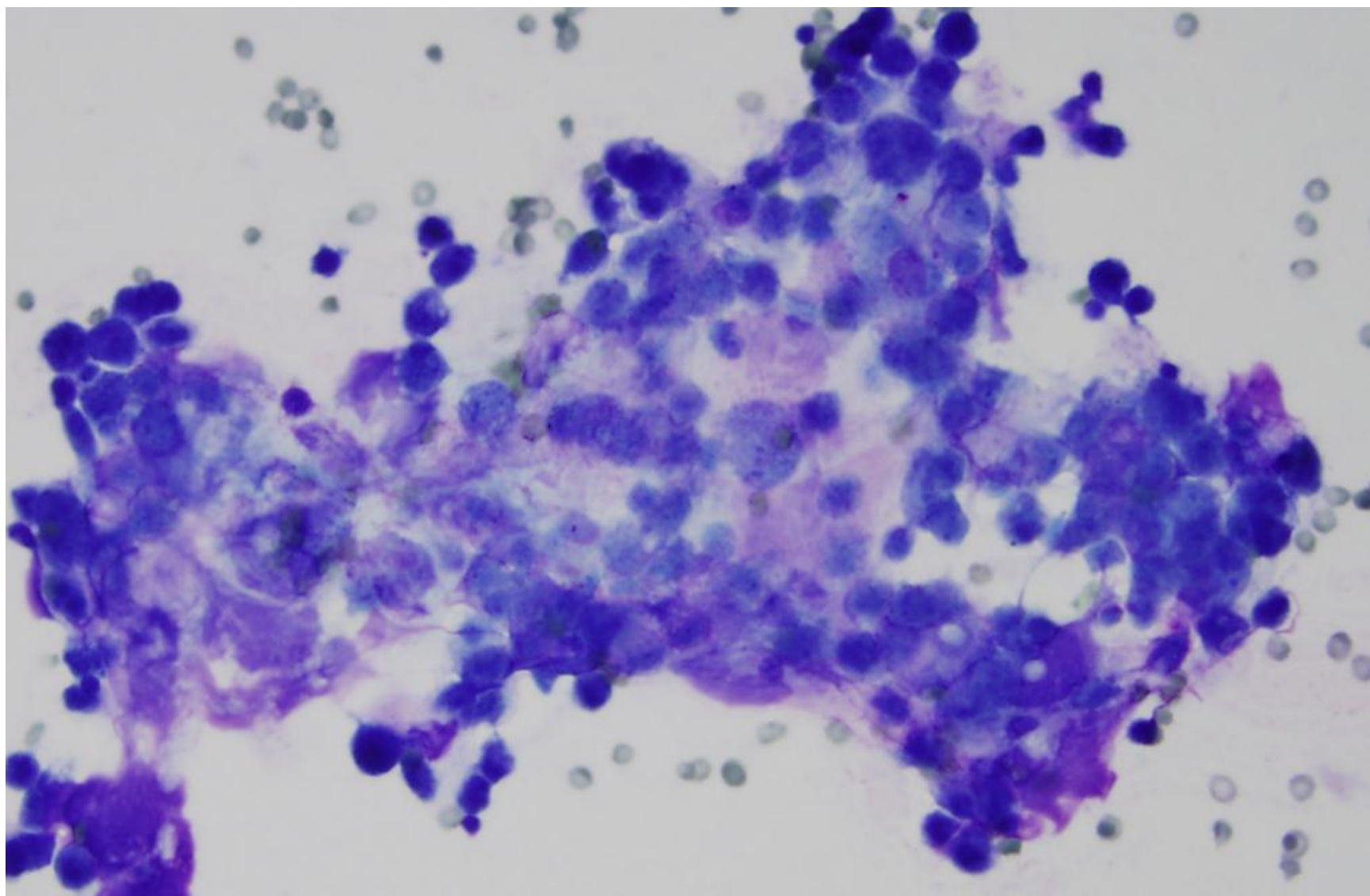


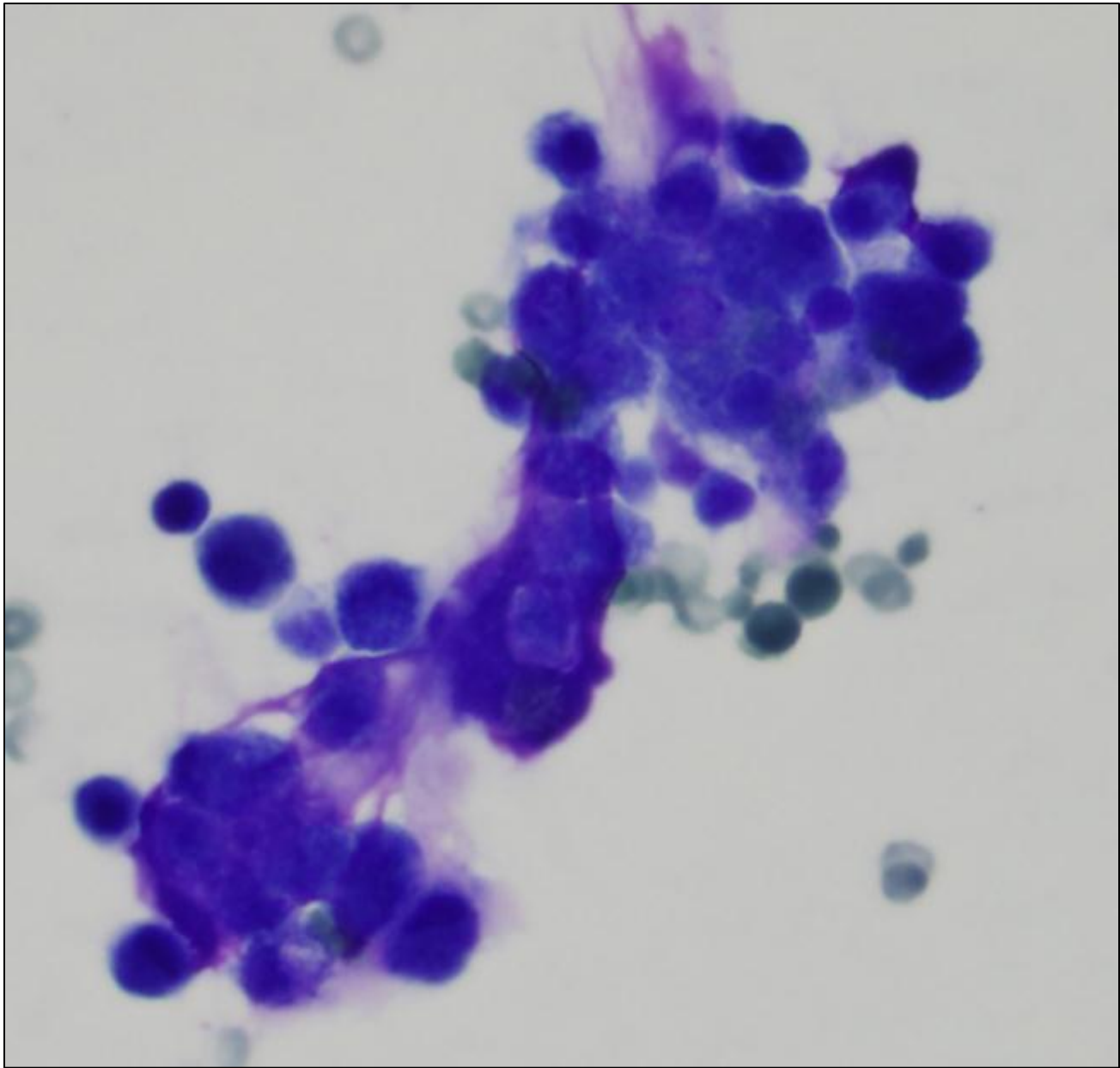
DIAGNOSIS:

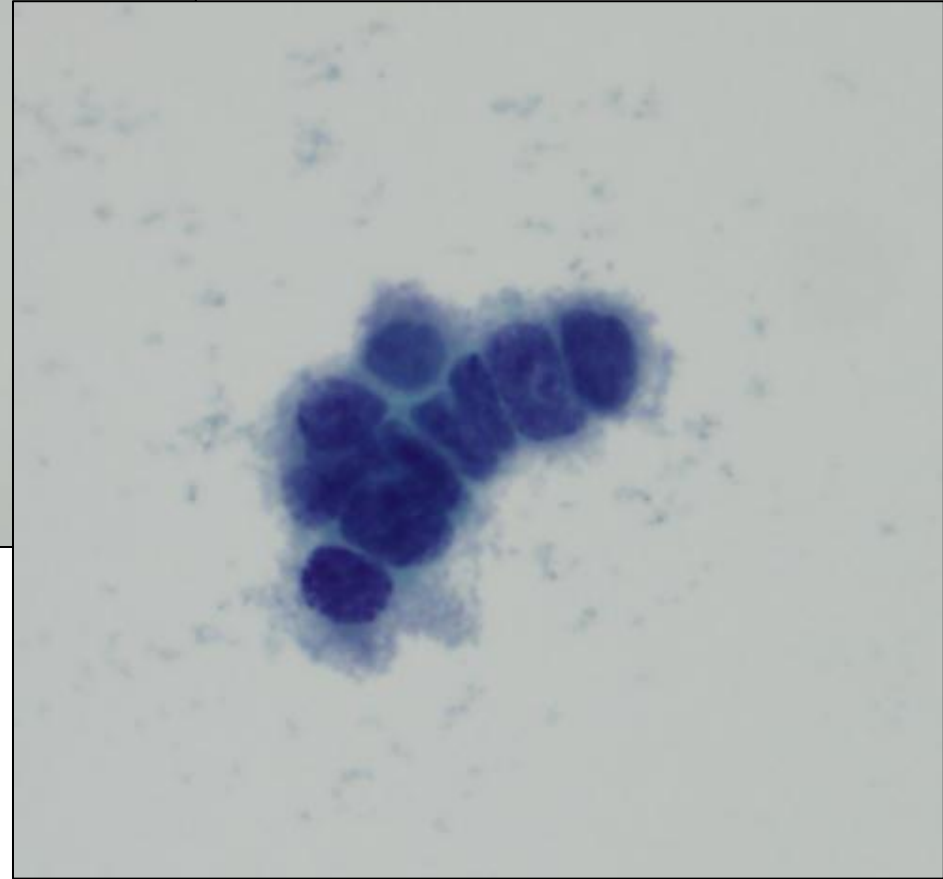
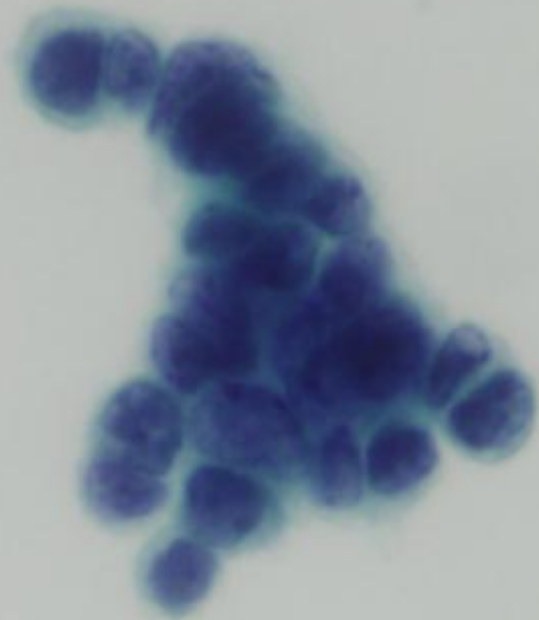
Positive for basaloid squamous cell carcinoma

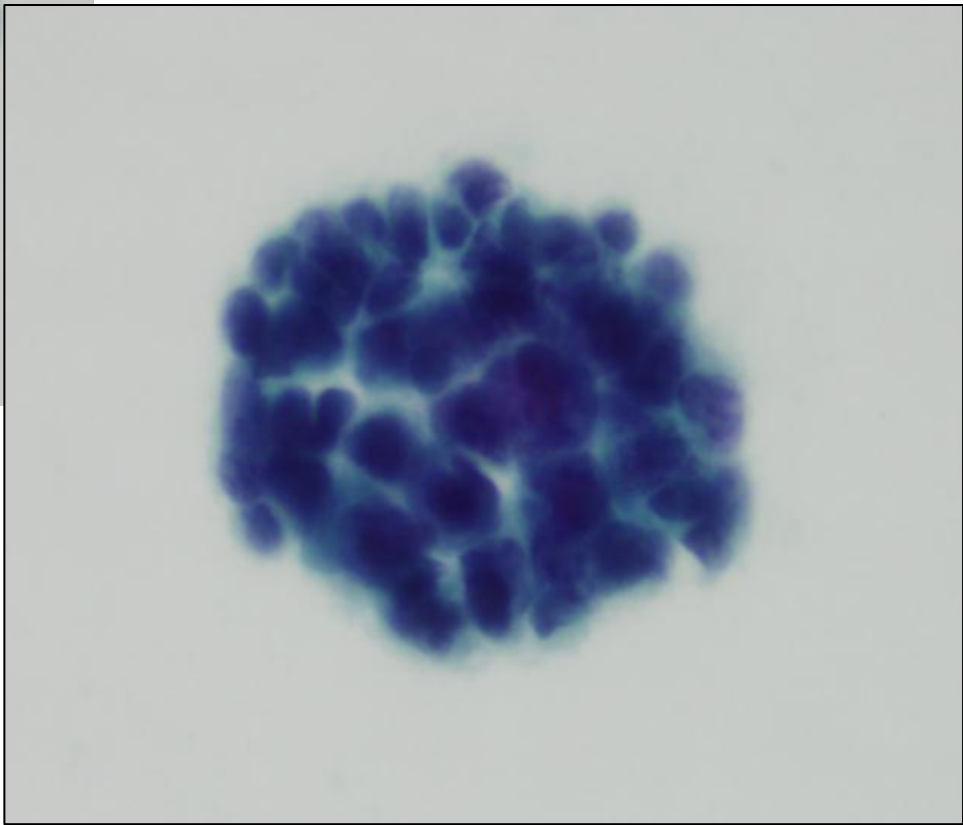
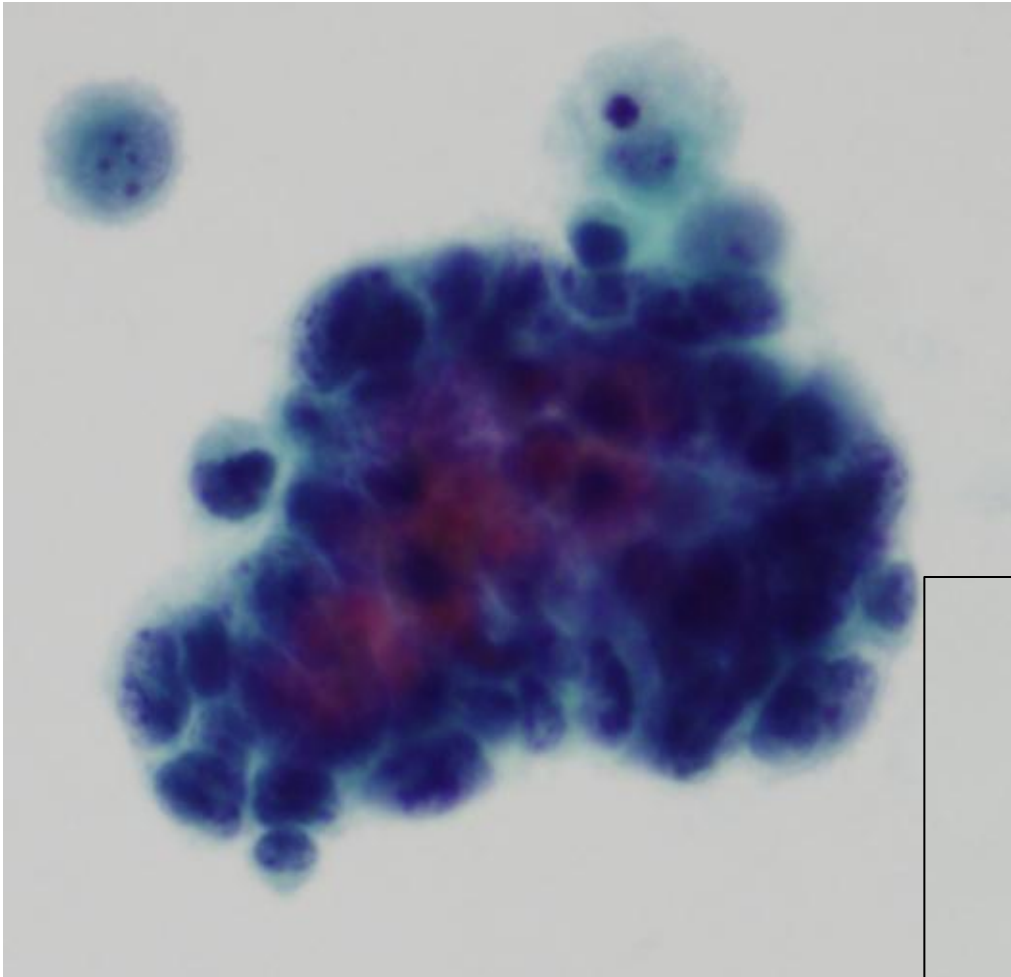
Case #2 Pleural fluid



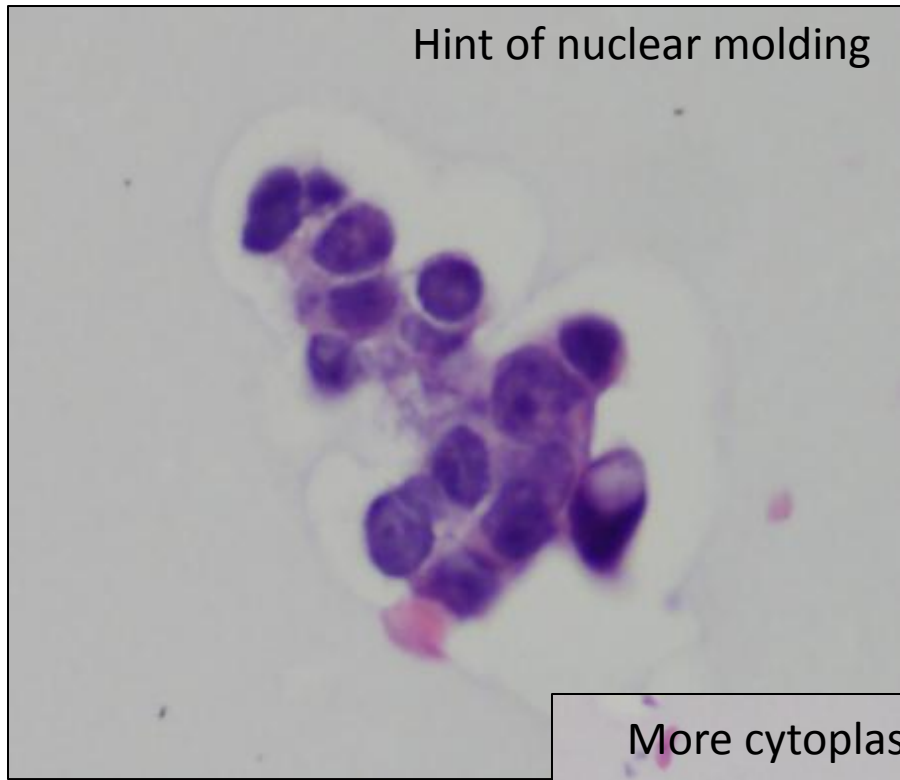




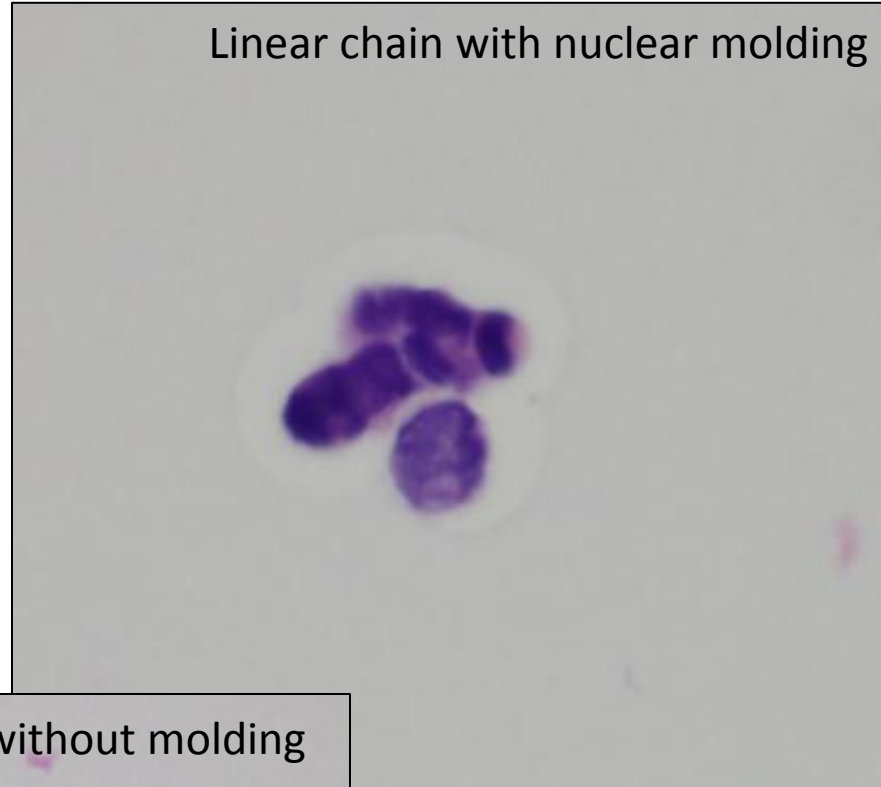




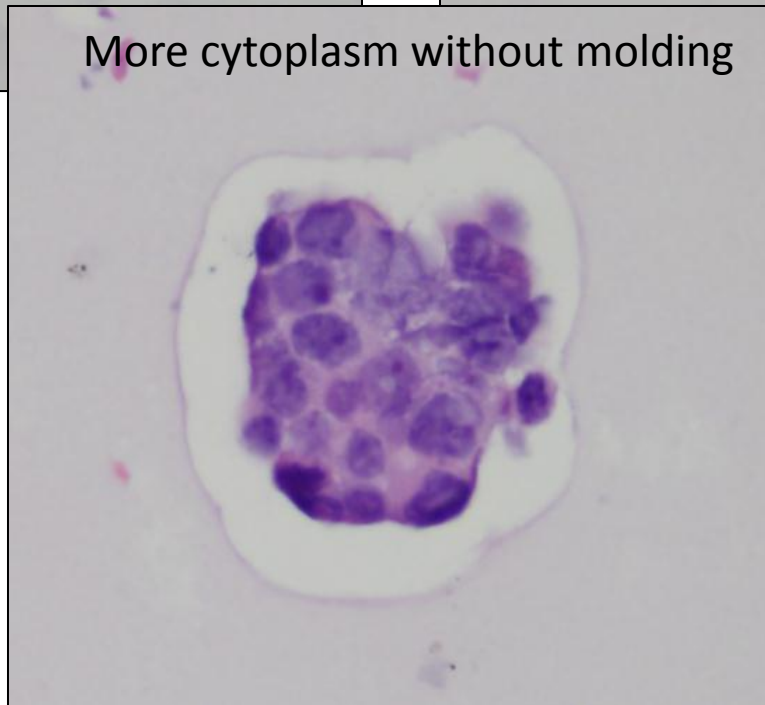
Hint of nuclear molding



Linear chain with nuclear molding



More cytoplasm without molding



POSITIVE FOR CARCINOMA
DIFFERENTIAL DIAGNOSTIC CONSIDERATIONS

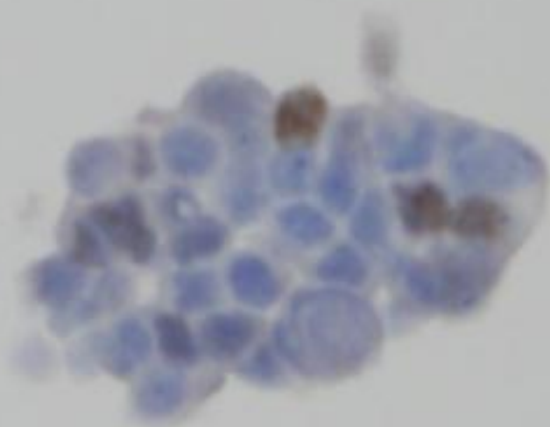
```
graph TD; A[POSITIVE FOR CARCINOMA  
DIFFERENTIAL DIAGNOSTIC CONSIDERATIONS] --> B[NEUROENDOCRINE CARCINOMA]; A --> C[ADENOCARCINOMA];
```

A flowchart with a top box containing the text 'POSITIVE FOR CARCINOMA' and 'DIFFERENTIAL DIAGNOSTIC CONSIDERATIONS'. Two arrows point downwards from this box to two separate boxes below. The left box contains 'NEUROENDOCRINE CARCINOMA' and the right box contains 'ADENOCARCINOMA'.

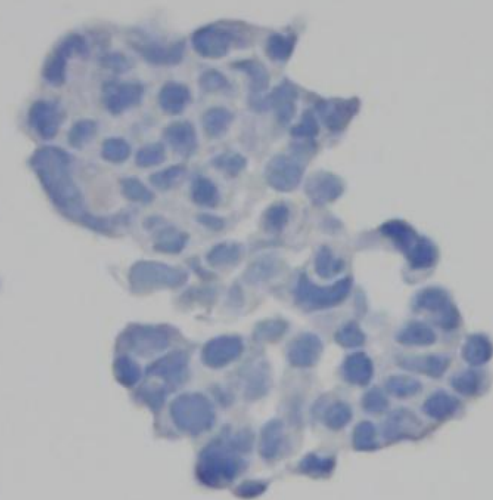
NEUROENDOCRINE CARCINOMA

ADENOCARCINOMA

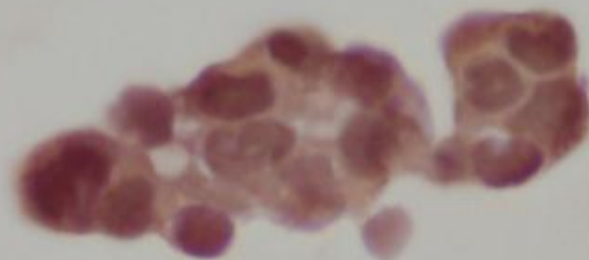
TTF-1



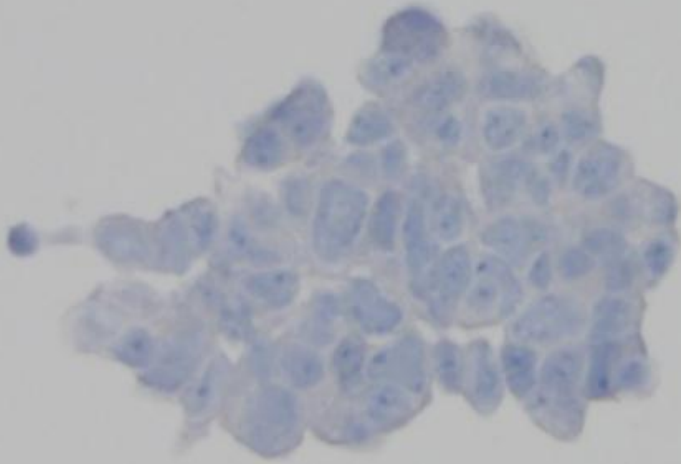
NAPSIN A



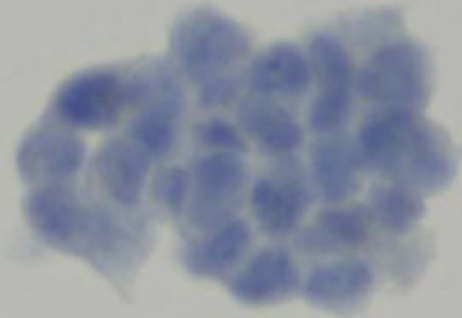
Mucicarmine



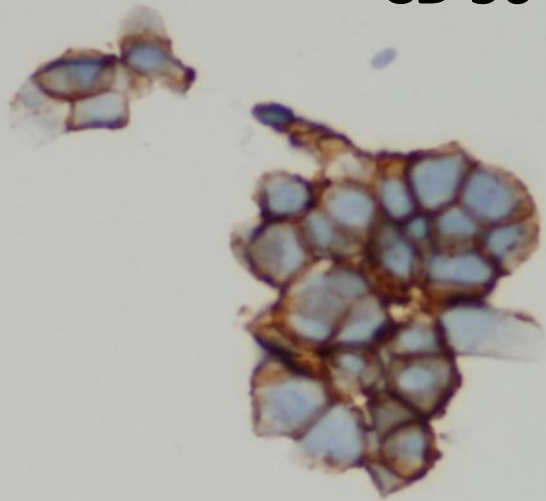
CK 5/6



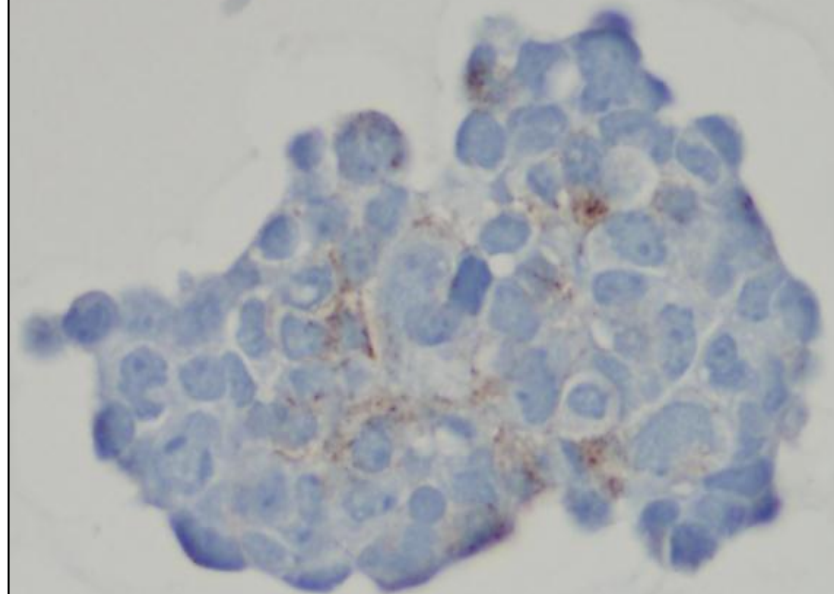
p63



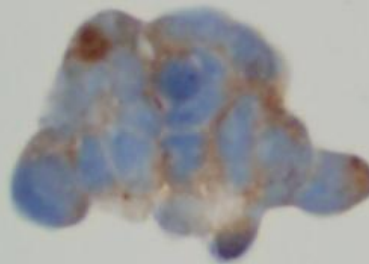
CD 56



Chromogranin



Synaptophysin



DX: Metastatic neuroendocrine carcinoma,
mixed non-small cell and small cell components
present

Typical Carcinoid**Atypical Carcinoid****Large Cell
Neuroendocrine
Carcinoma****Small Cell Carcinoma**

I

Cell size	Small to medium	Medium	Large	Small to medium
Predominant pattern	Tight clusters/rosettes	Loose clusters/rosettes	Loose clusters/rosettes	Dispersed cells
Cytoplasm	Moderately abundant	Scant to moderate, lacy	Scant or moderate, lacy	Scant
Plexiform vascularity	Common	Common	Not known	Rare
Nuclear molding	Rare	Slight to moderate	Slight to moderate	Prominent
Chromatin	Coarsely granular	Coarsely granular	Coarsely granular	Finely granular
Nucleoli	Small	Occasionally prominent	Prominent	Inconspicuous
Mitoses (per 10 high power fields)	Rare (<2)	Uncommon (2–10)	Abundant (≥ 11 ; median 70)	Abundant (≥ 11 ; median 80)
Nuclear pleomorphism	Mild	Moderate	Marked	Moderate
Necrosis	Absent	Moderate	Marked	Marked
Nuclear crush	Absent	Mild	Moderate	Marked