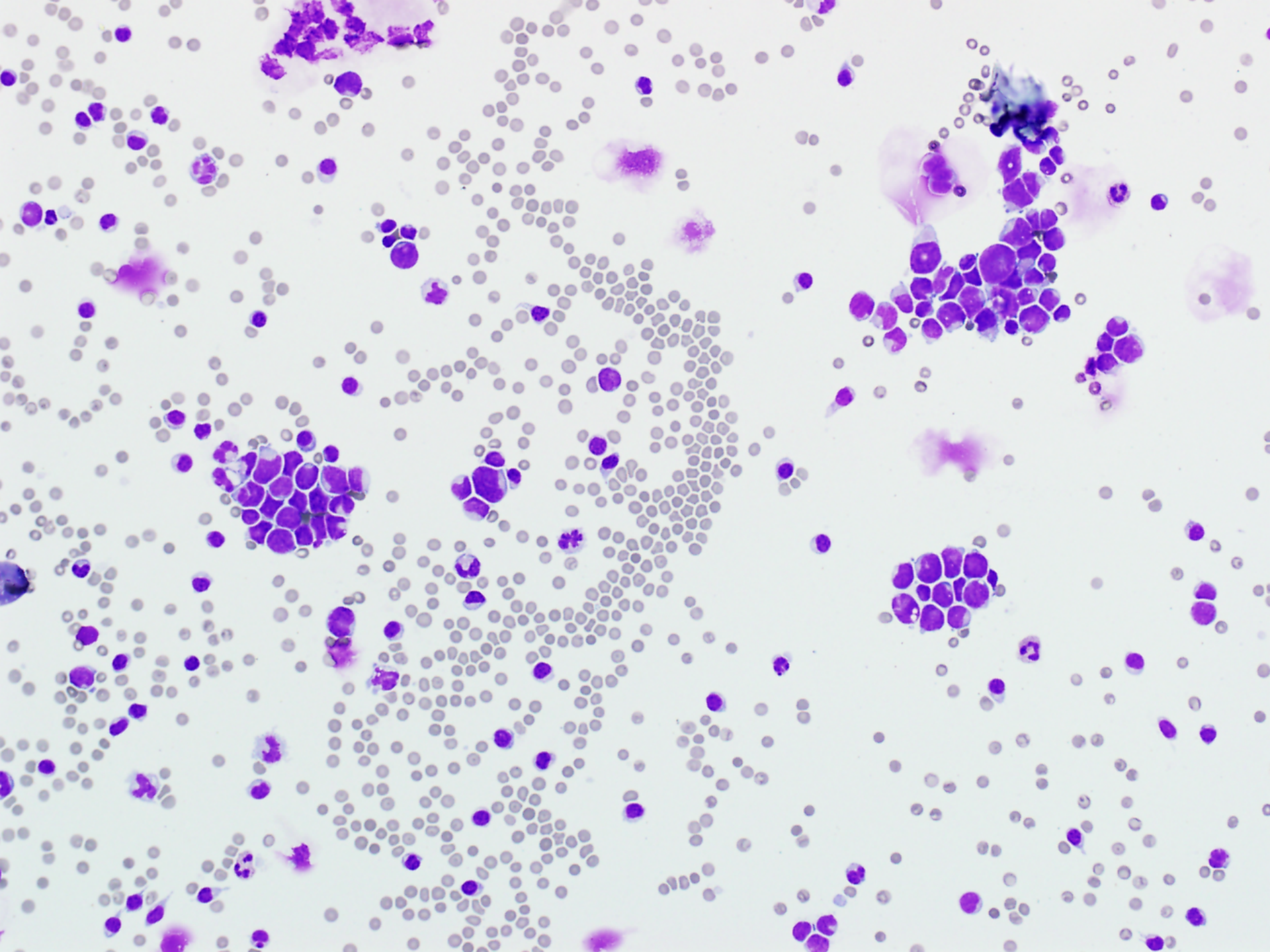


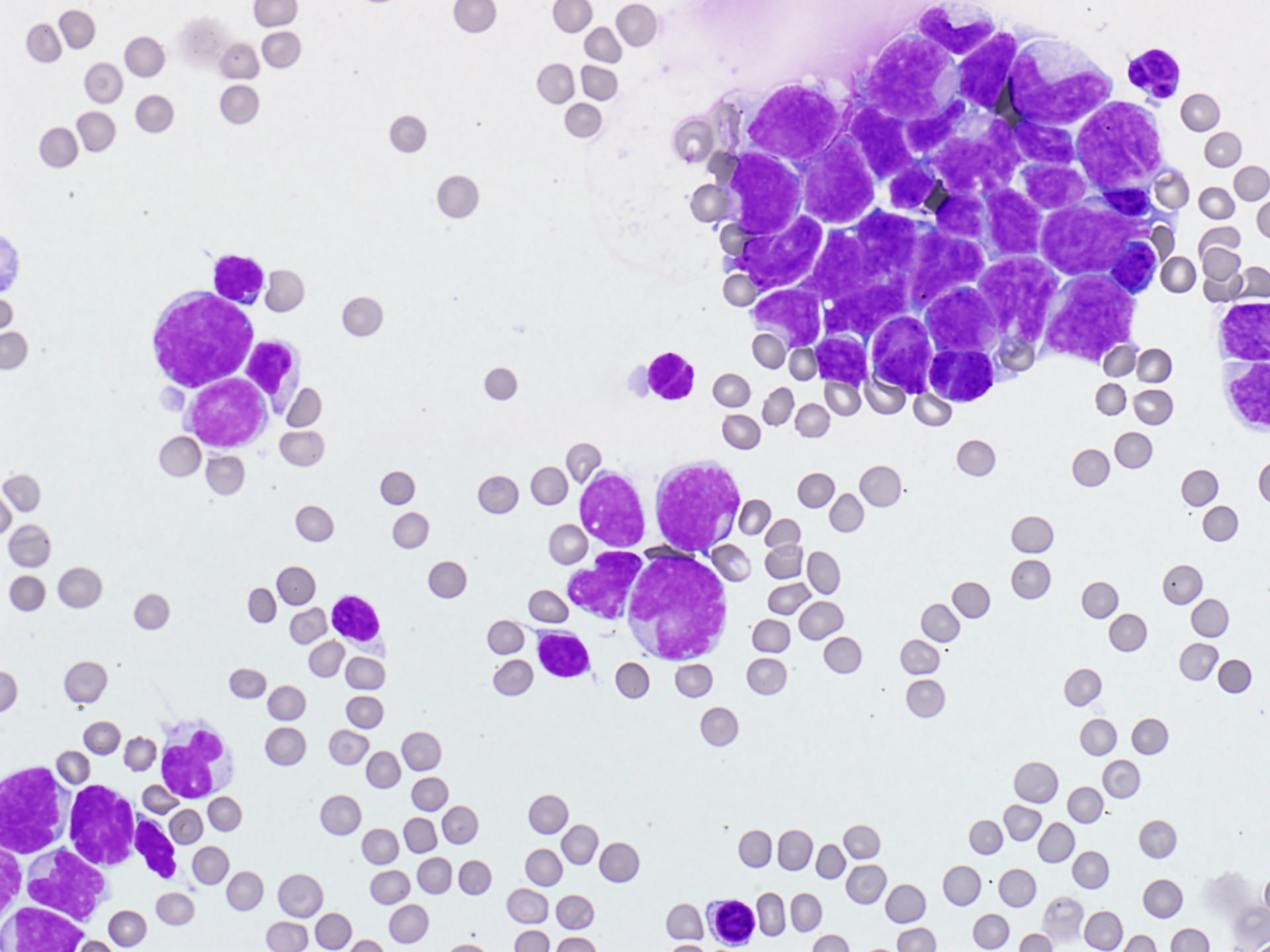
Case of the Week

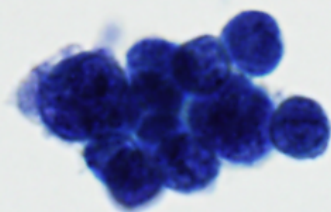
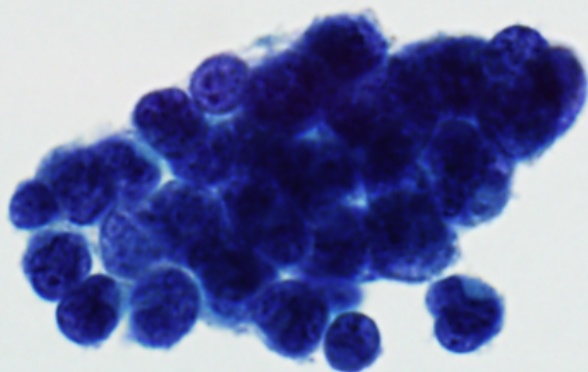
July 9, 2012

History

- **History: 4 year old boy with a cerebellar mass.**
- **Specimen Received: Cerebrospinal fluid**







Diagnosis - Medulloblastoma

- **The CSF specimen is cellular and is notable for small, round neoplastic cells with high nuclear-to-cytoplasmic ratios, present singly and in clusters.**
- **The Diff-Quik preparation especially highlights nuclear molding and irregularities in the nuclear contours.**
- **Cohesive clusters composed of small round blue cells are appreciated in the ThinPrep slide. The chromatin is granular and nucleoli are not seen.**

Diagnosis - Medulloblastoma

- **The differential diagnosis includes small round blue cell tumors that can arise in a variety of locations in the central nervous system such as:**
 - **Pineal gland (pineoblastoma)**
 - **Cerebellum (medulloblastoma)**
 - **Retina (retinoblastoma)**
- **In this specific clinical scenario, the most likely diagnosis is medulloblastoma. In fact, a biopsy was performed on the brain tumor which was also diagnosed as a medulloblastoma.**