

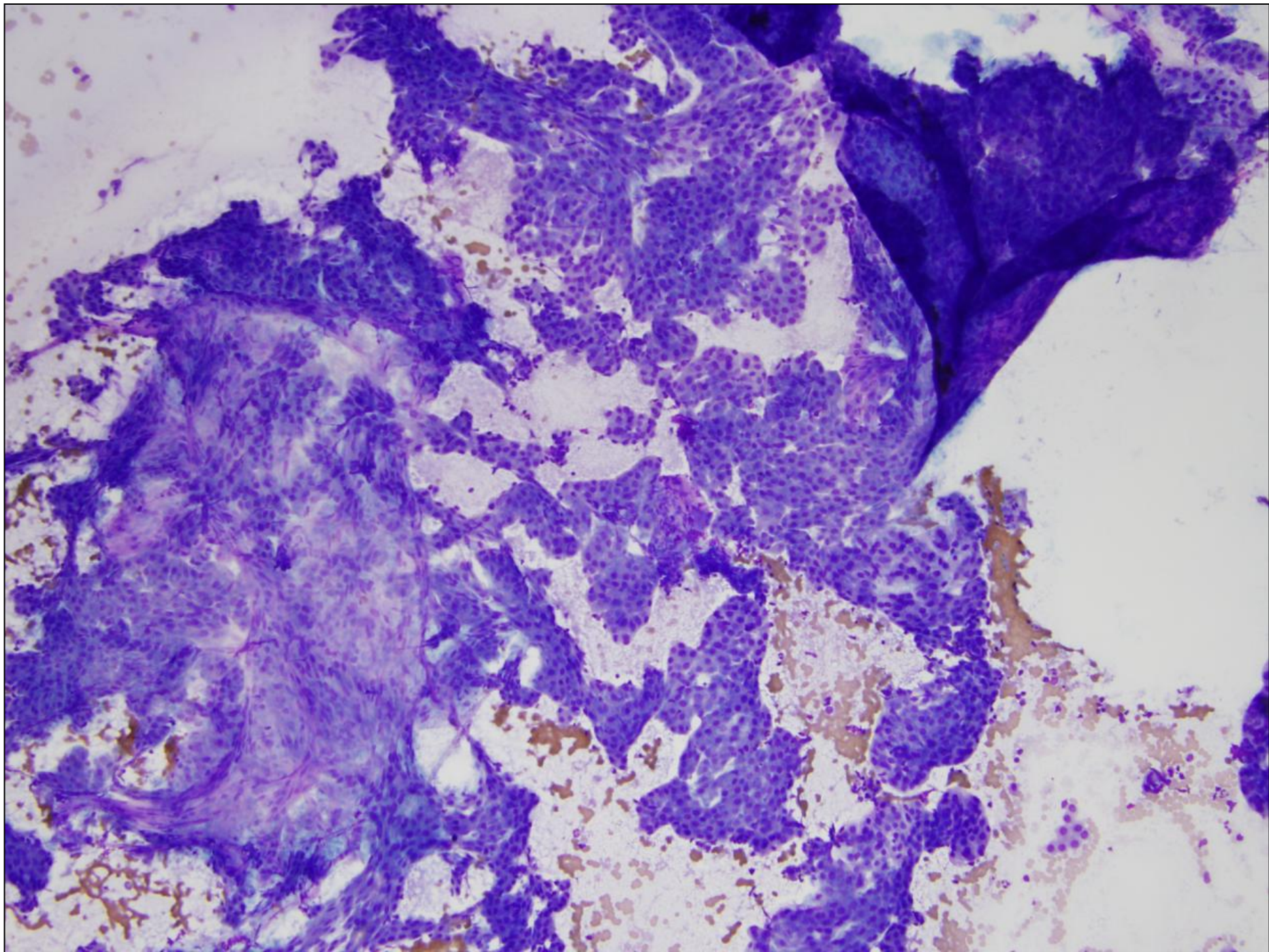
Interesting Case Conference

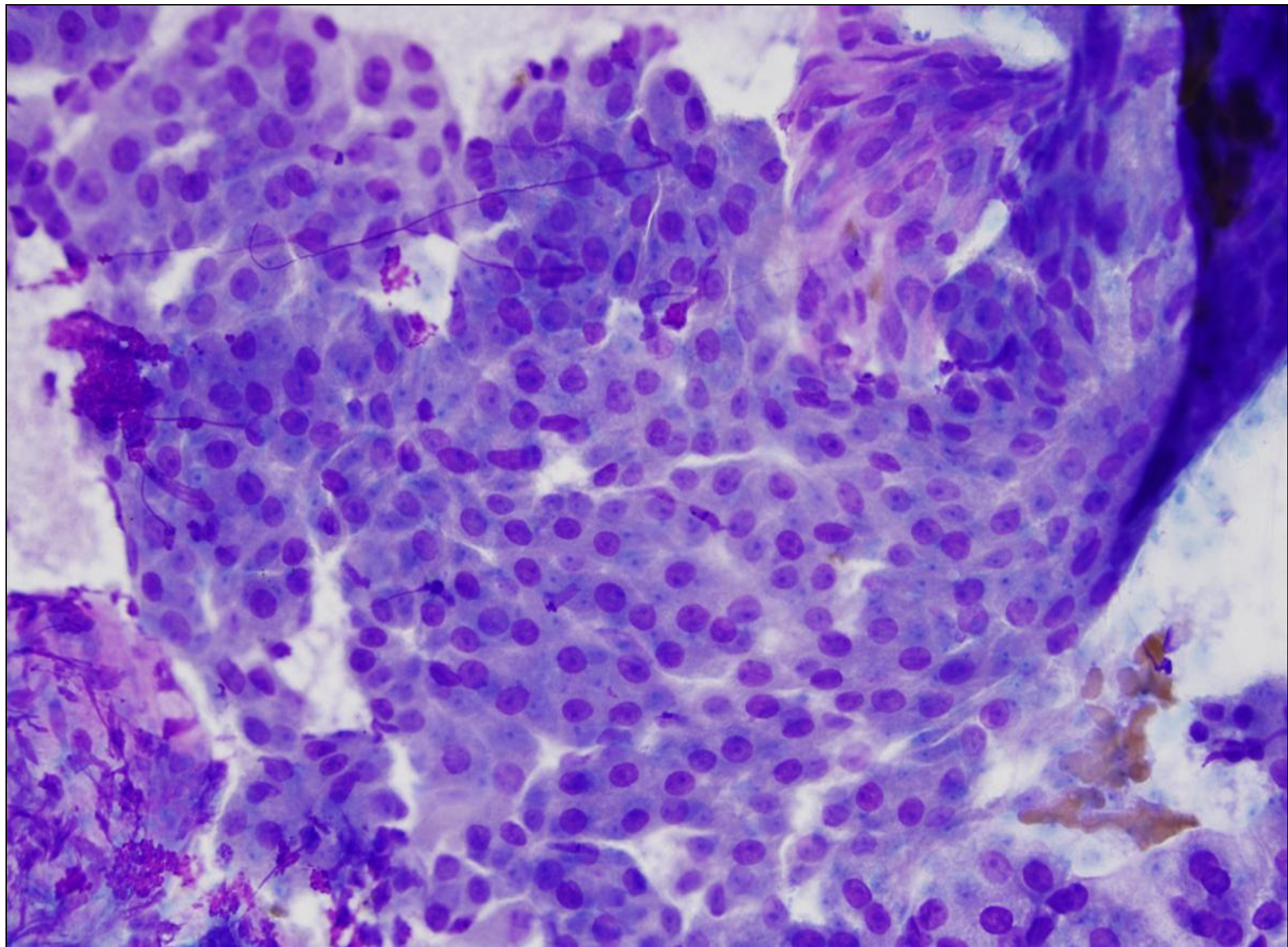
Scott Kantola, MD

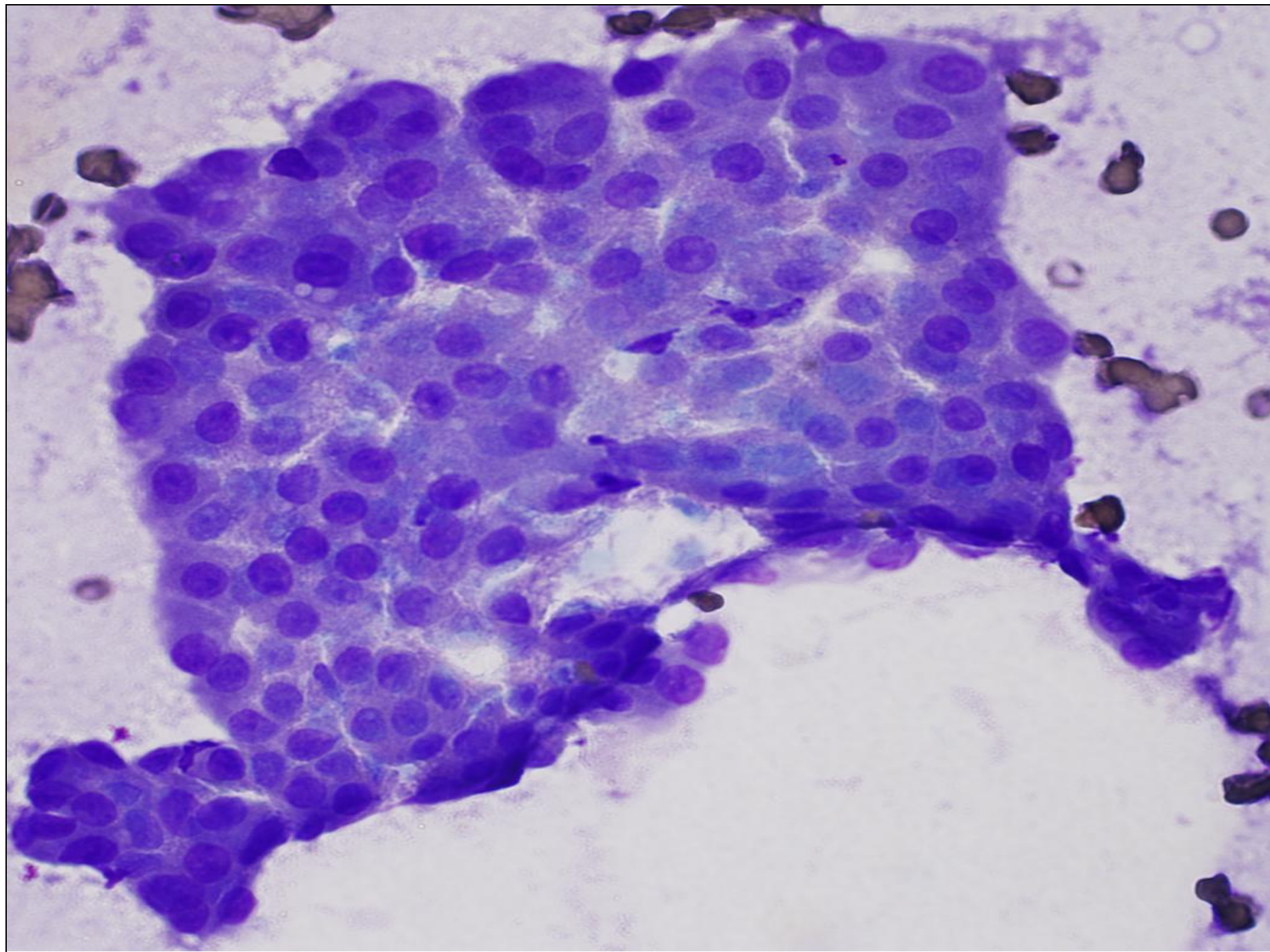
7/22/2013

Presentation

- 79 yo Female with parotid masses
 - Bilateral, multiple
 - Largest lesion, 2.5 cm left on CT
 - Present for approximately 1 month
- No other significant medical history
 - nonsmoker
- Exam: non-tender, mobile masses
- Per report and OSH FNA was suspicious for Warthin's tumor

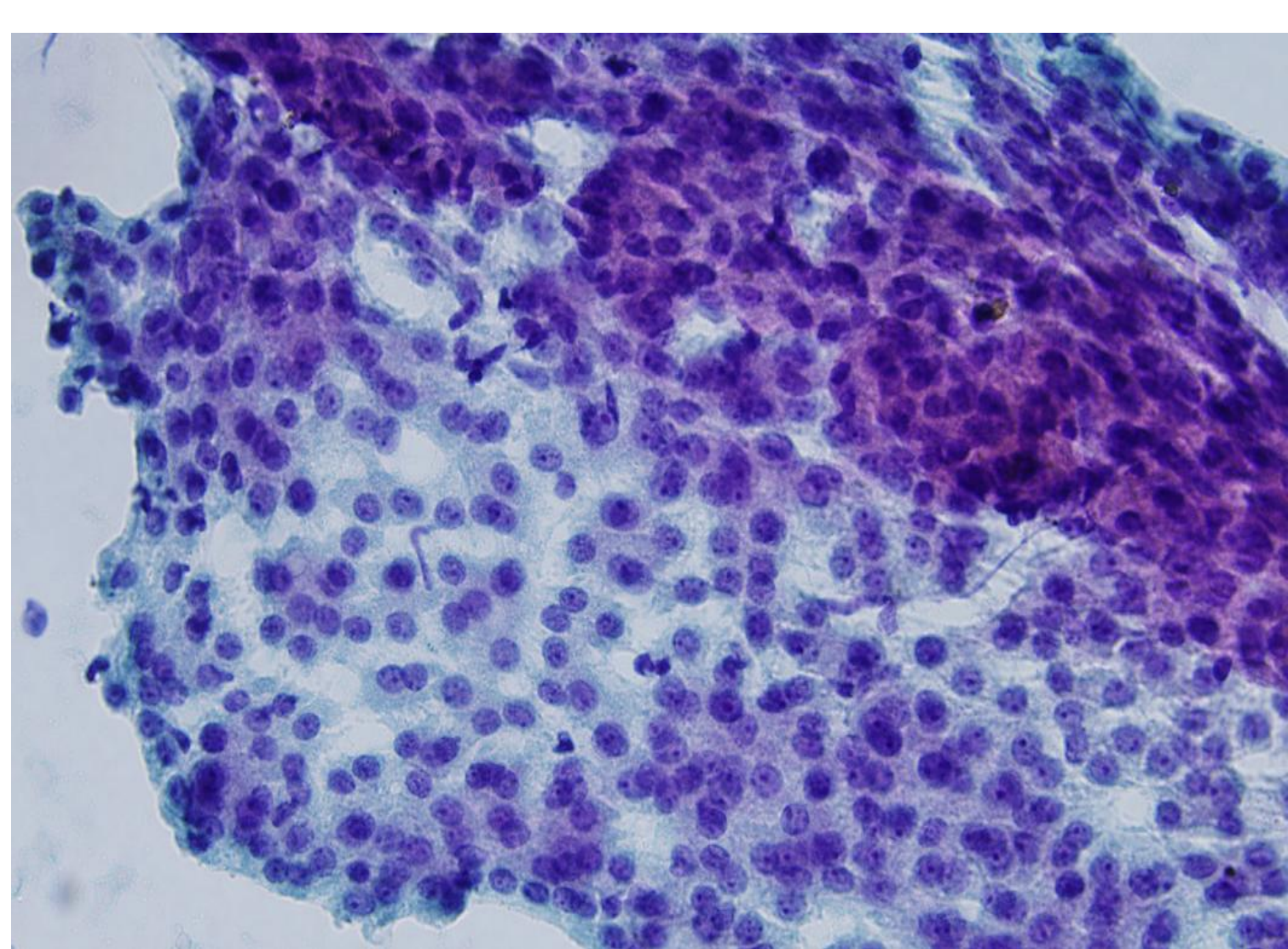


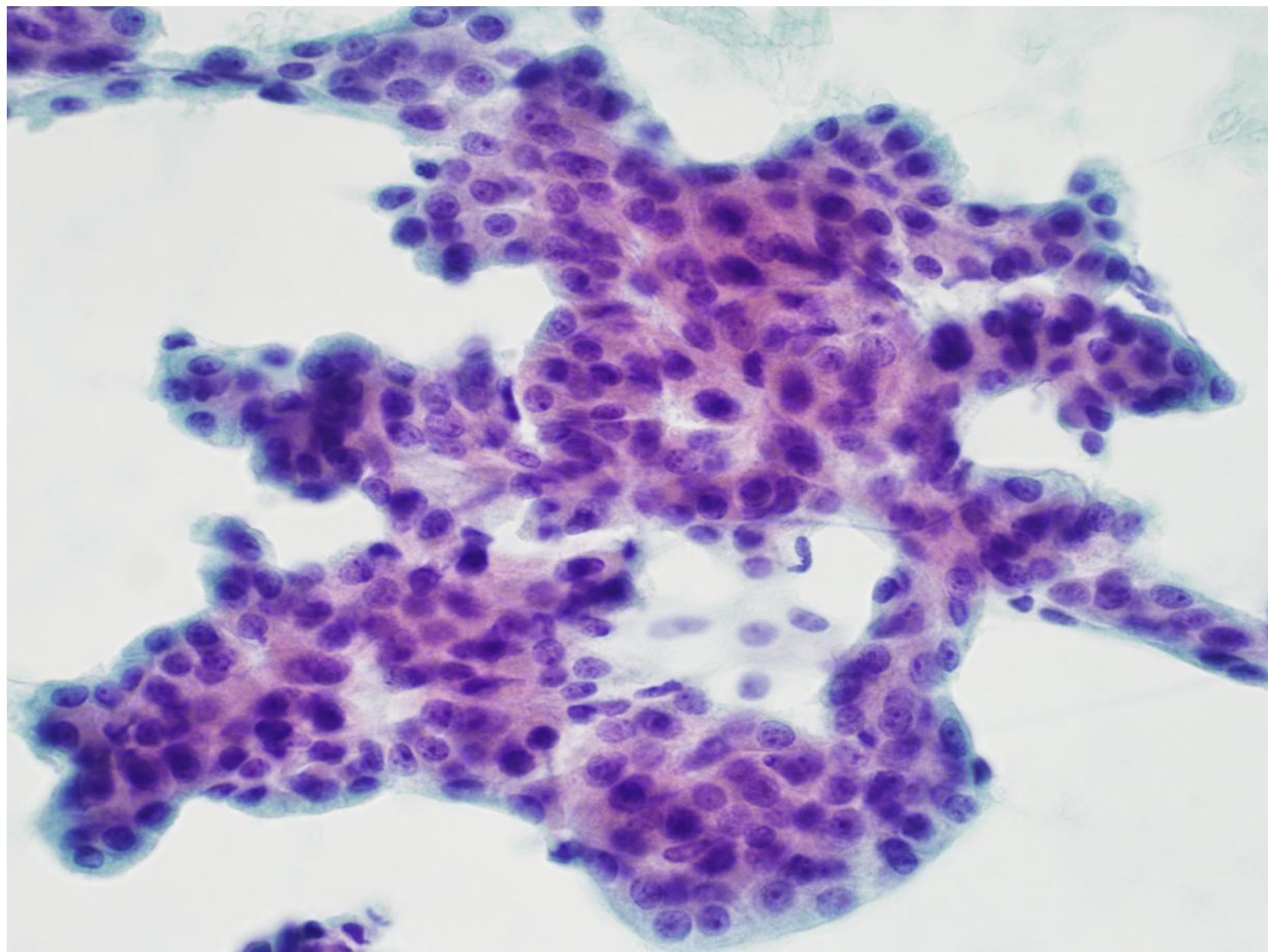


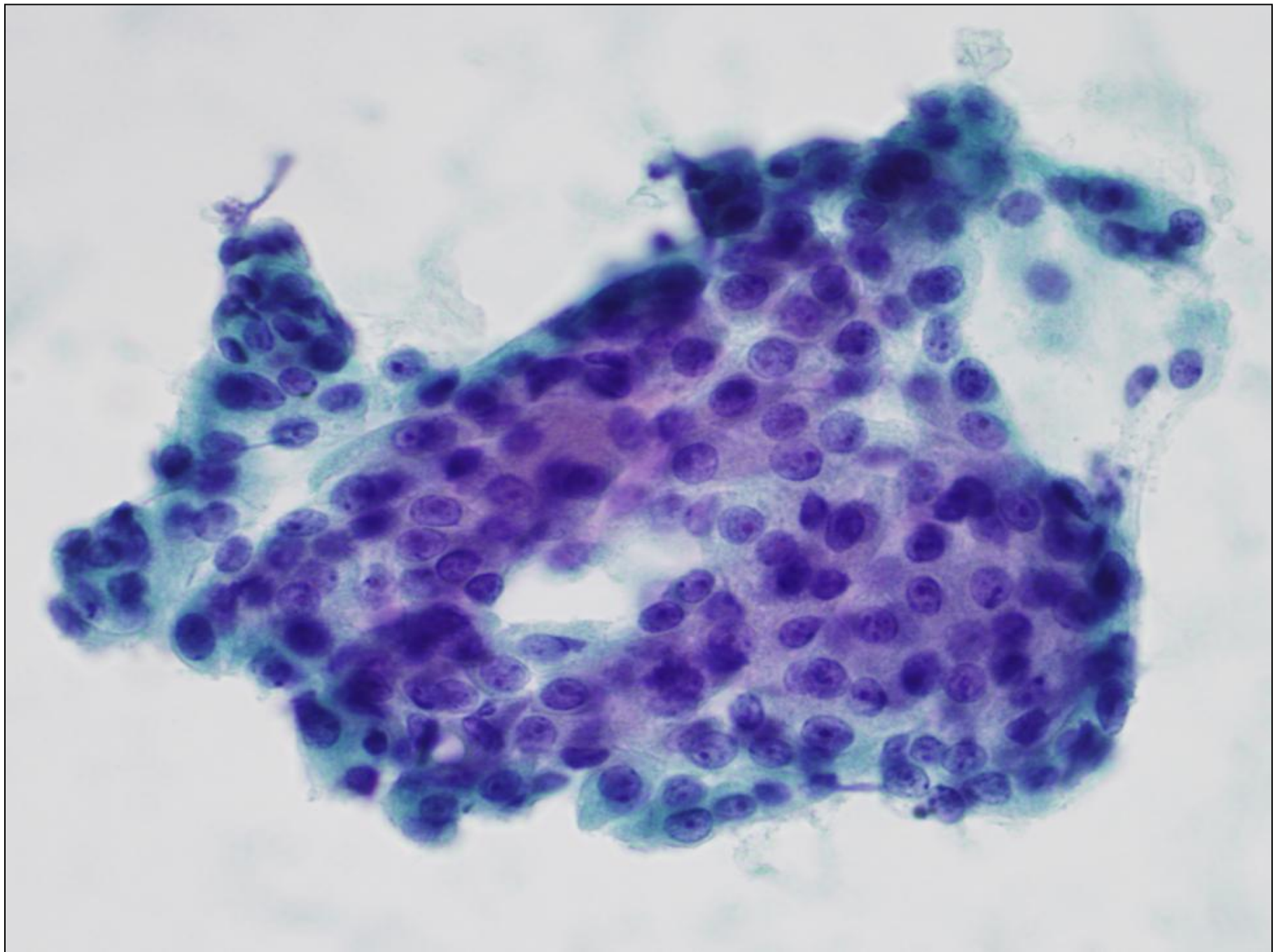


Preliminary Assessment

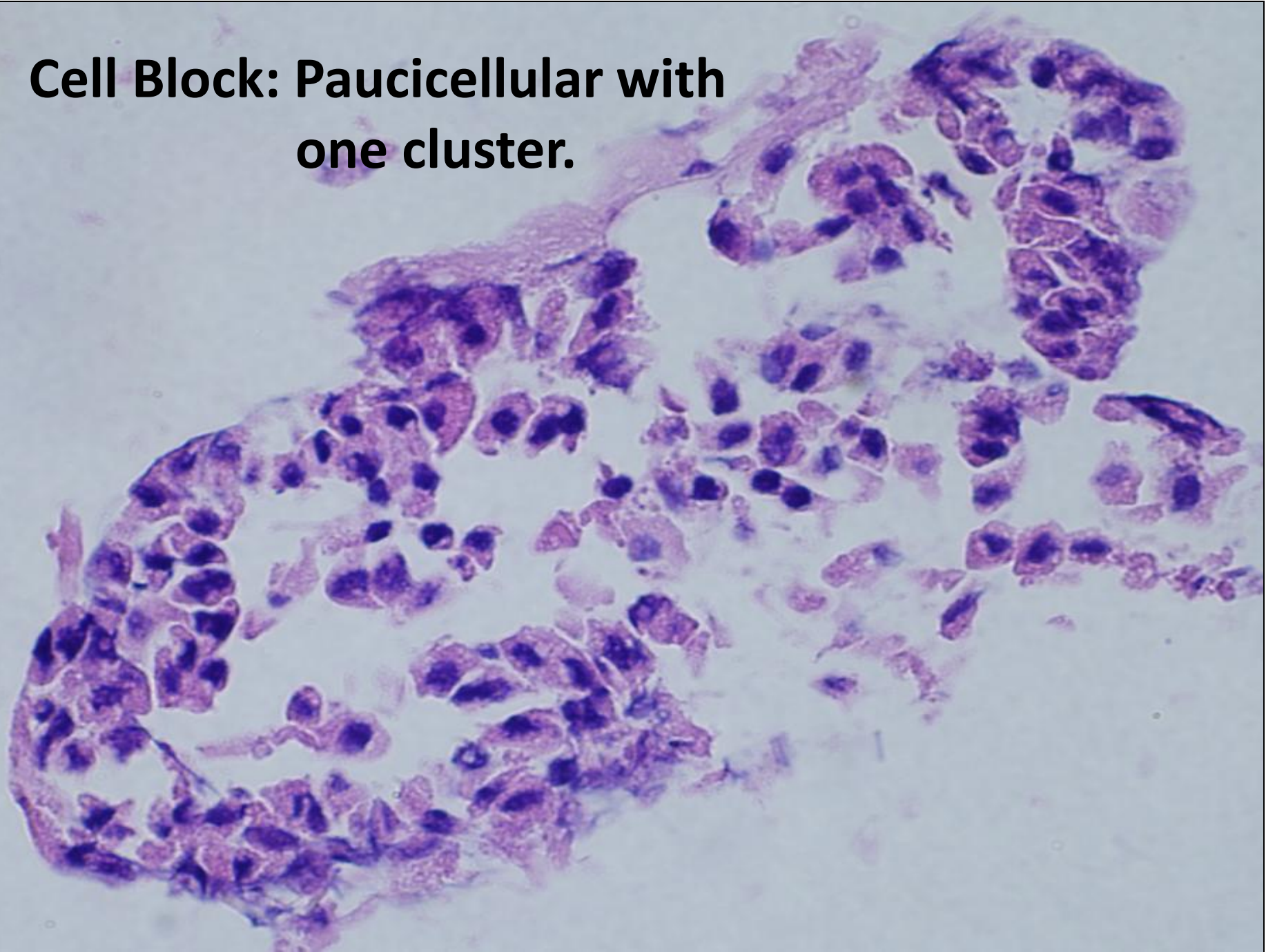
- 5 Passes
 - 4 smears (2 DQ, 2 pap)
 - 3 dedicated passes for cell block
- Dx: Low-grade salivary gland neoplasm
- At the time of preliminary assessment acinic cell carcinoma was favored







**Cell Block: Paucicellular with
one cluster.**



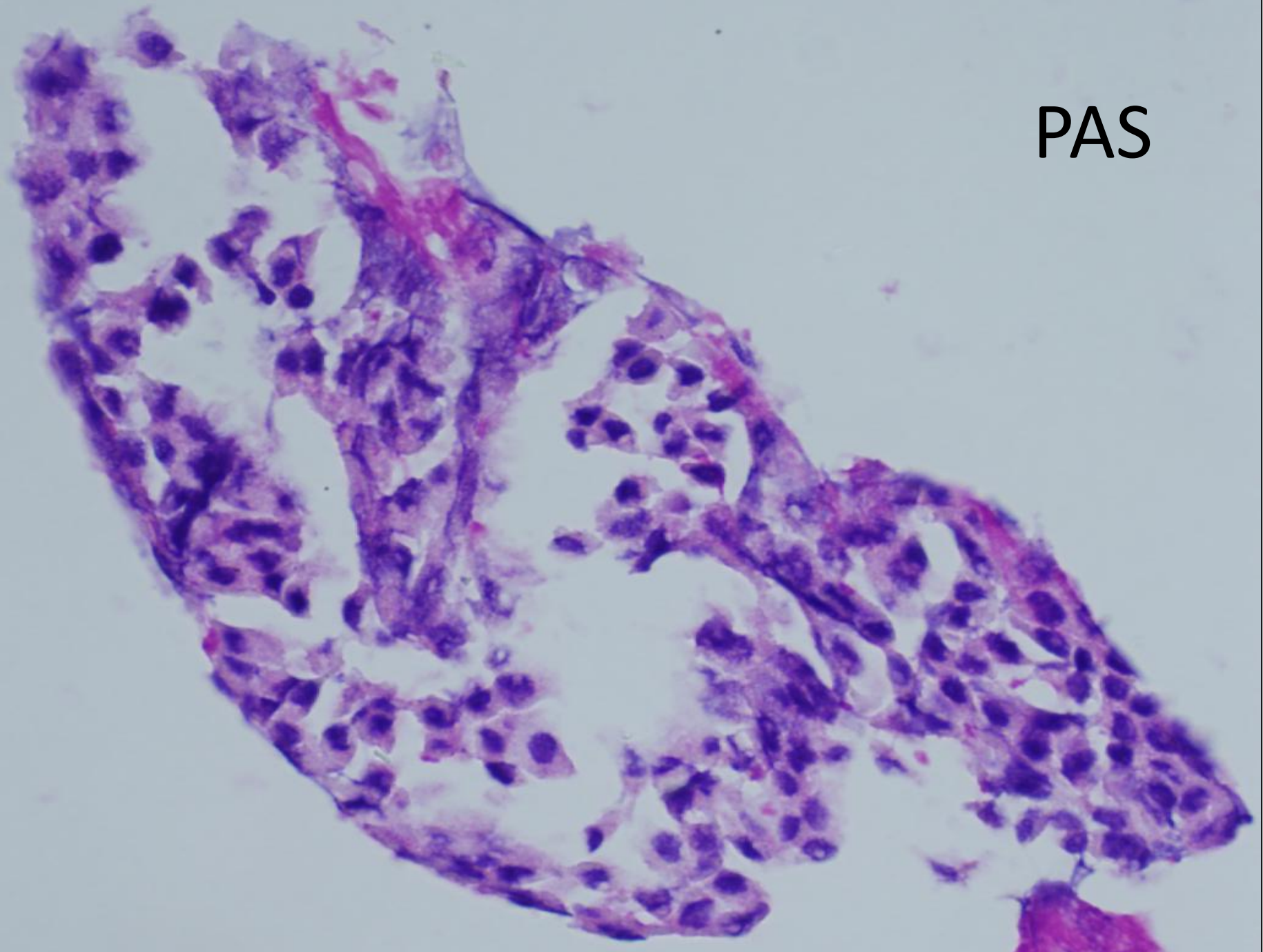
Oncocytic Salivary Gland Neoplasms

Differential Dx:

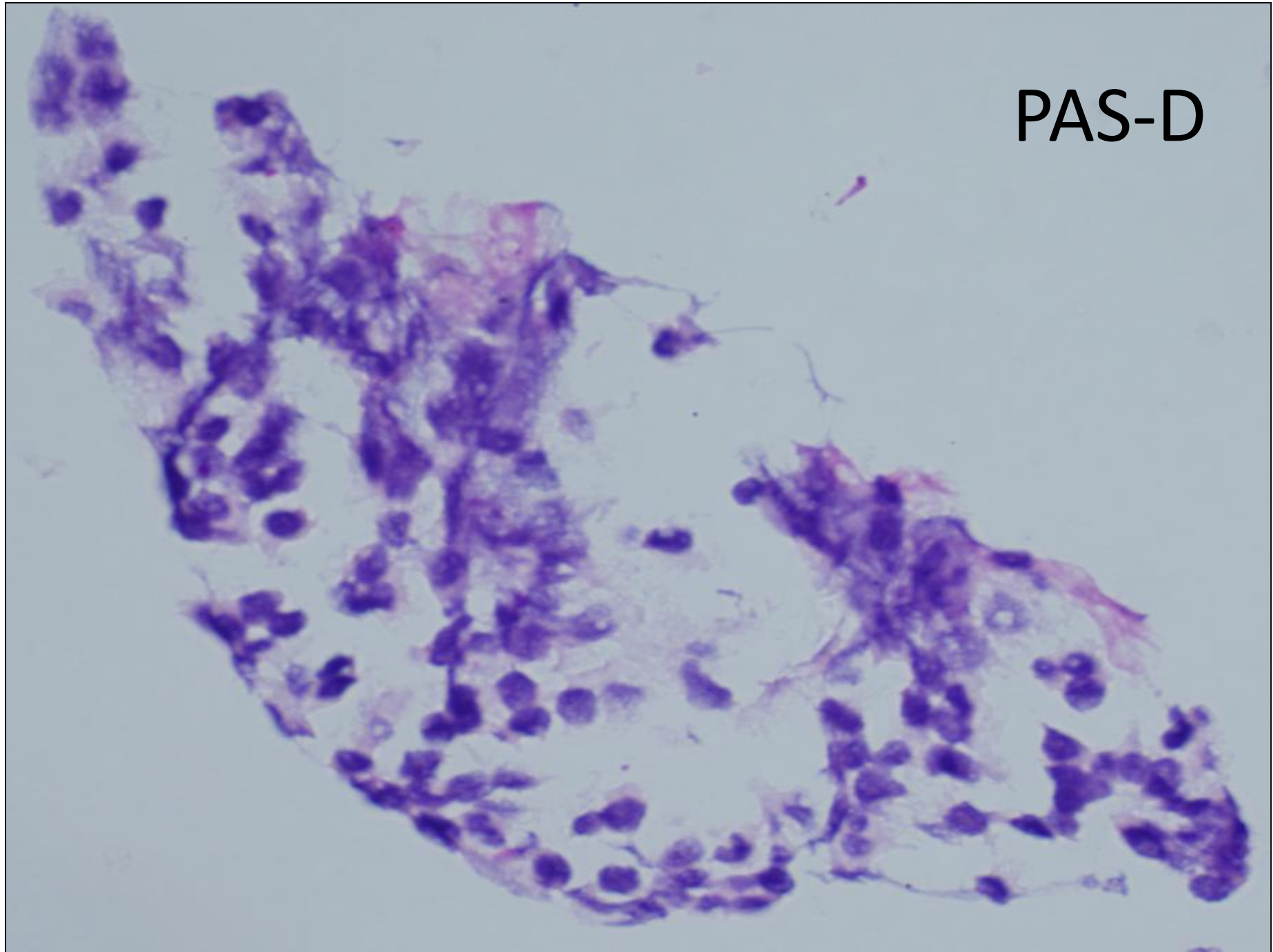
- Acinic Cell Carcinoma
- Oncocytoma
- Oncocytic Carcinoma
- Warthin Tumor (not likely due to lack of lymphocytes)
- Oncocytic variant of Mucoepidermoid Carcinoma
- Pleomorphic adenoma with Oncocytic features

Stains or special studies to resolve DDX?

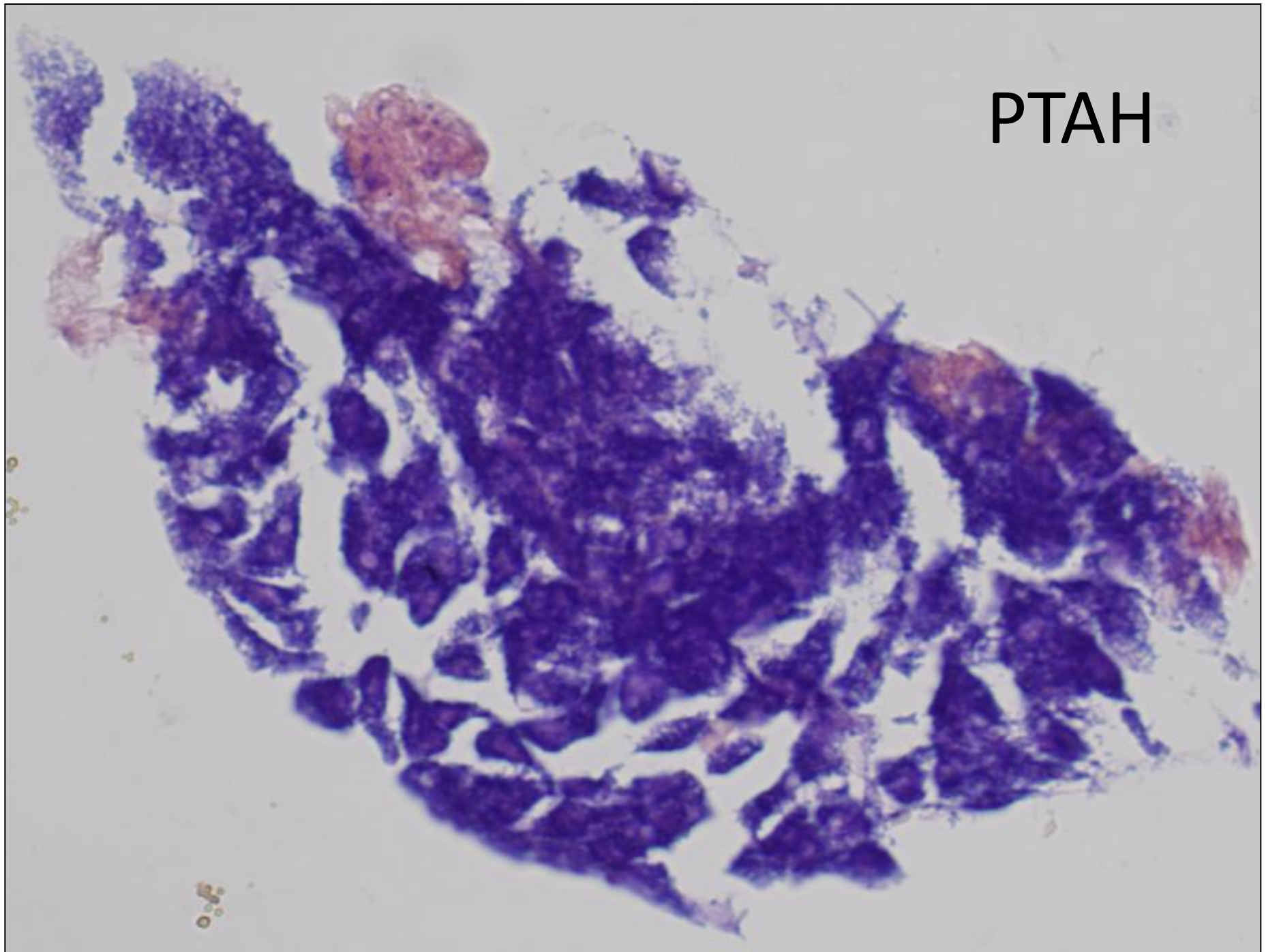
PAS



PAS-D



РТАН



Feature	Normal	Oncocytoma	Warthin Tumor	Acinic Cell Ca
Background	Stripped nuclei	Clean	Granular debris, lymphocytes	Stripped nuclei
Cell borders	Indistinct	Well defined	Well defined	Indistinct
Cytoplasm	Abundant and vacuolated	Moderate and densely granular	Moderate and densely granular	Abundant and vacuolated
PTAH	Negative	Positive	Positive	Negative
PAS+ Diastase resistant	Positive	Negative	Negative	Positive

Adapted from Faquin, W. and Powers, C. Salivary Gland Cytopathology. Essentials in Cytopathology Series. Springer. 2008. p. 151.

Final Sign-out

Positive for neoplastic cells.

Oncocytic salivary gland neoplasm.

Comment (summarized)

- DDx includes oncocytoma, oncocytic CA, acinic cell carcinoma, and Warthin tumor. Based on the PAS(-)/PTAH(+) profile, an oncocytic tumor (oncocytoma vs oncocytic CA) is favored. Excision is recommended.

Oncocytoma

- Rare benign salivary gland neoplasm
- 1-3% of salivary gland tumors
- Majority occur in parotid gland of older adults
 - Mean age 6-7 decade
 - No gender predilection
- Most are unifocal, but can be multifocal
- Discrete, well circumscribed nodule
 - In contrast to oncocytosis
- Painless, slowly enlarging mass
- Average size 3-4 cm
- *Carcinomas are clinically expansive, invasive tumors requiring histologic examination for Dx.*