

# Interesting Case Conference

10/22/12

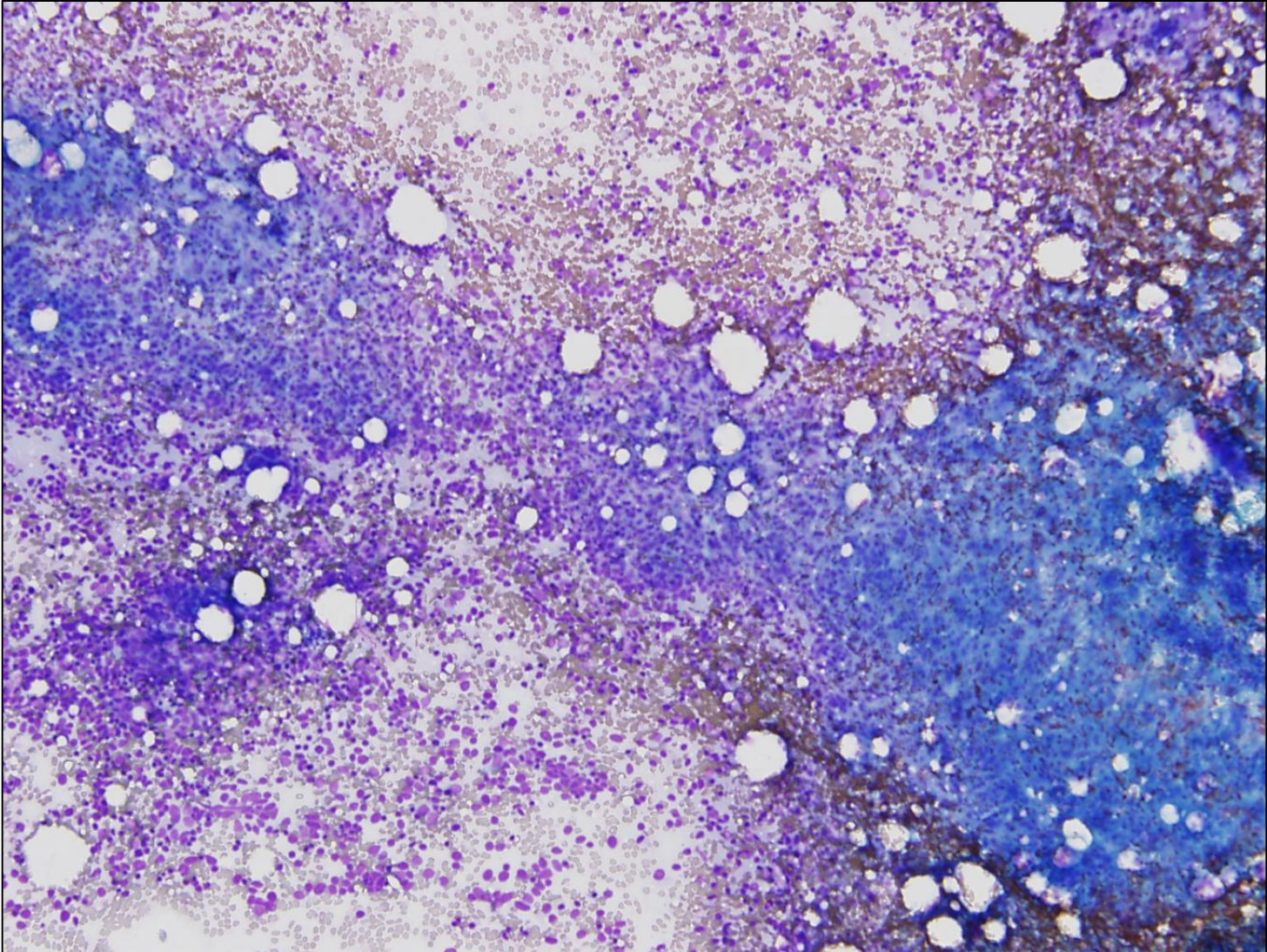
# HISTORY

---

- 50 year old female with history of \_\_\_\_\_.
- Clinical exam in 7/5/2012 revealed no palpable cervical, supraclavicular, infraclavicular or axillary lymph nodes.
- Patient presented to Cancer Center 8/16/2012 with palpable 1.5 cm right supraclavicular lymph node.

# Diff-Quik: Low Power

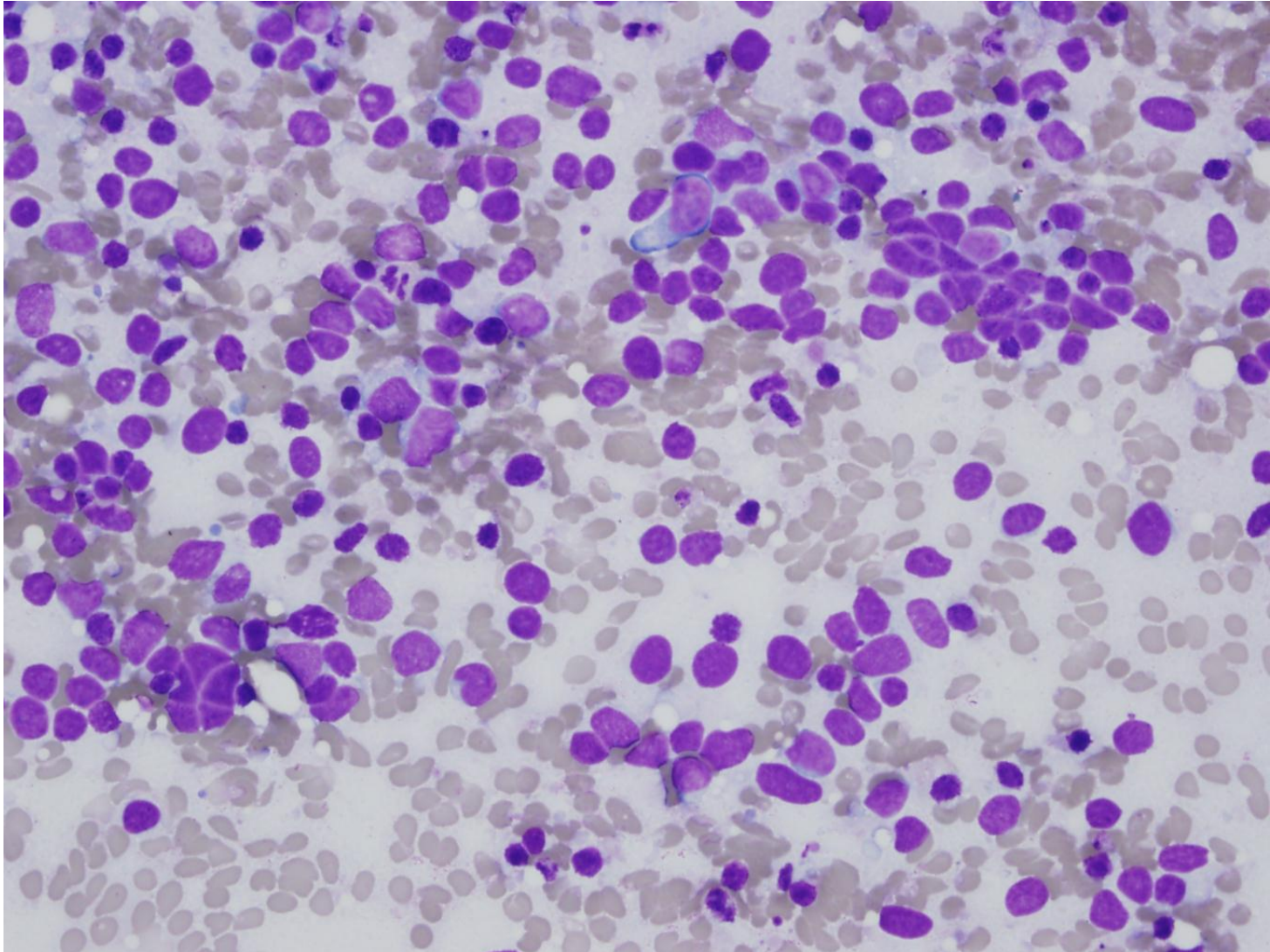
---





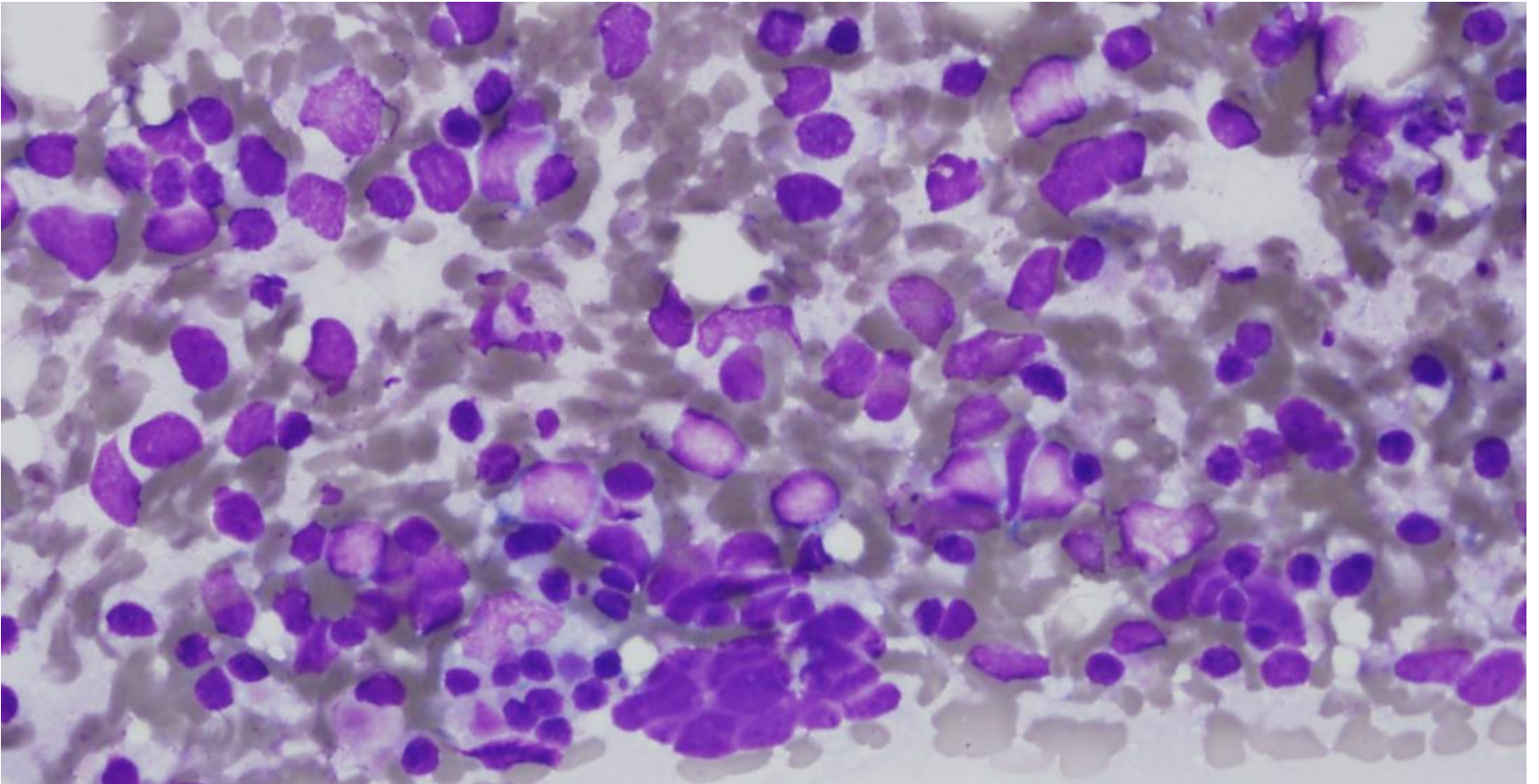
# Diff-Quik

---



# Diff-Quik

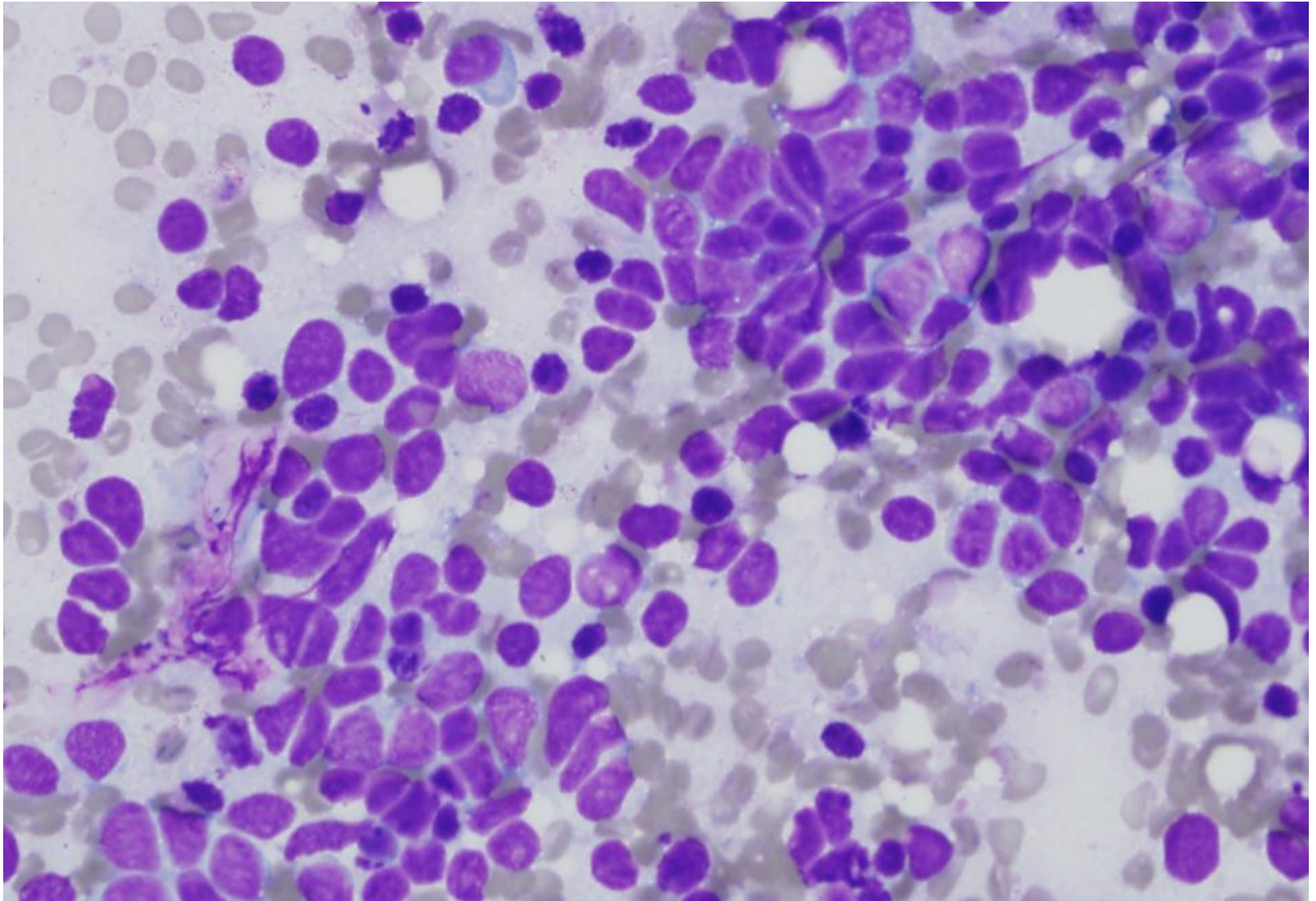
---





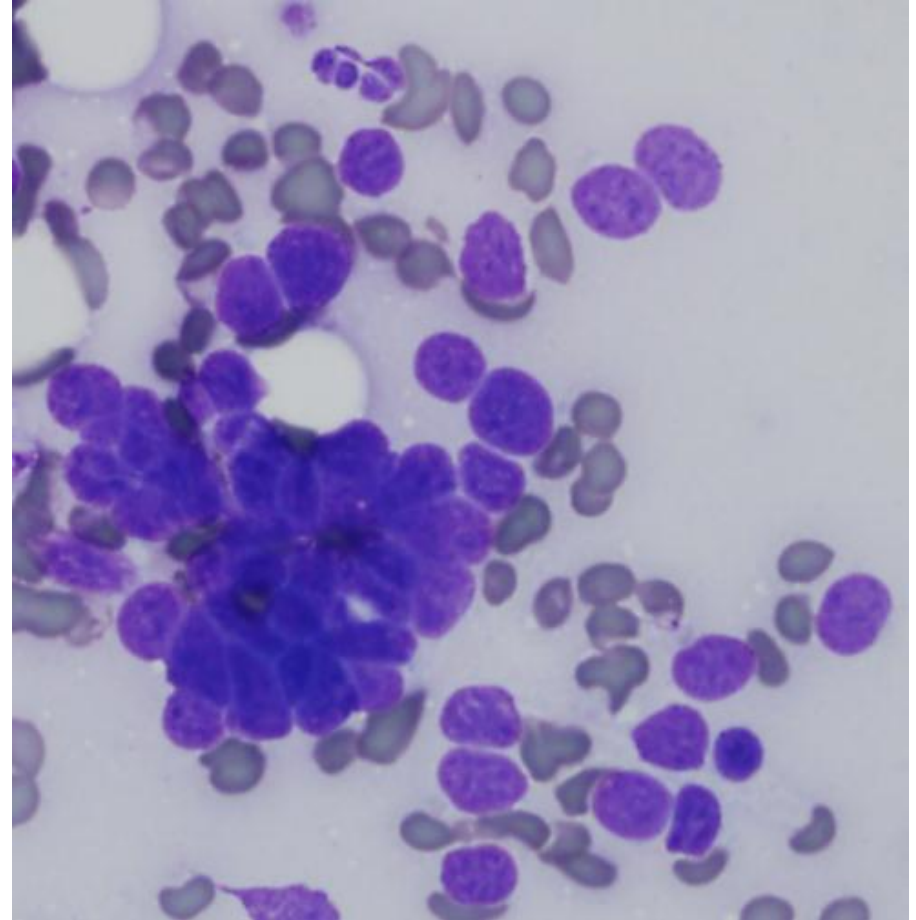
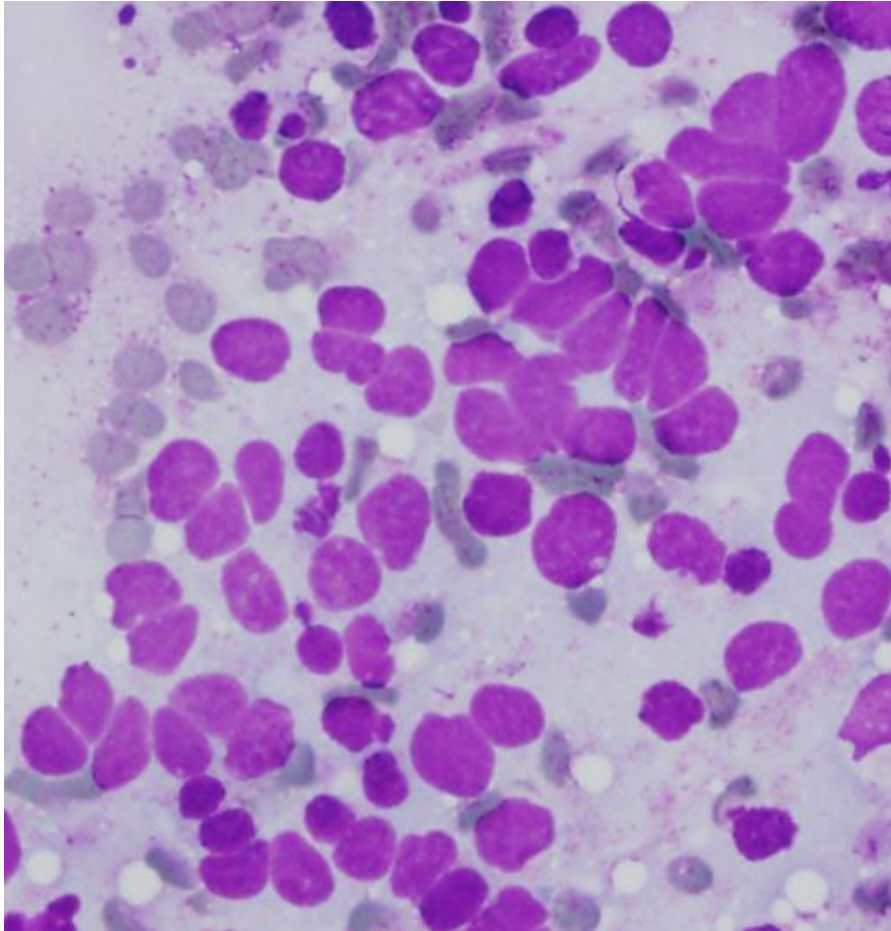
# Diff-Quik

---



# Diff-Quik

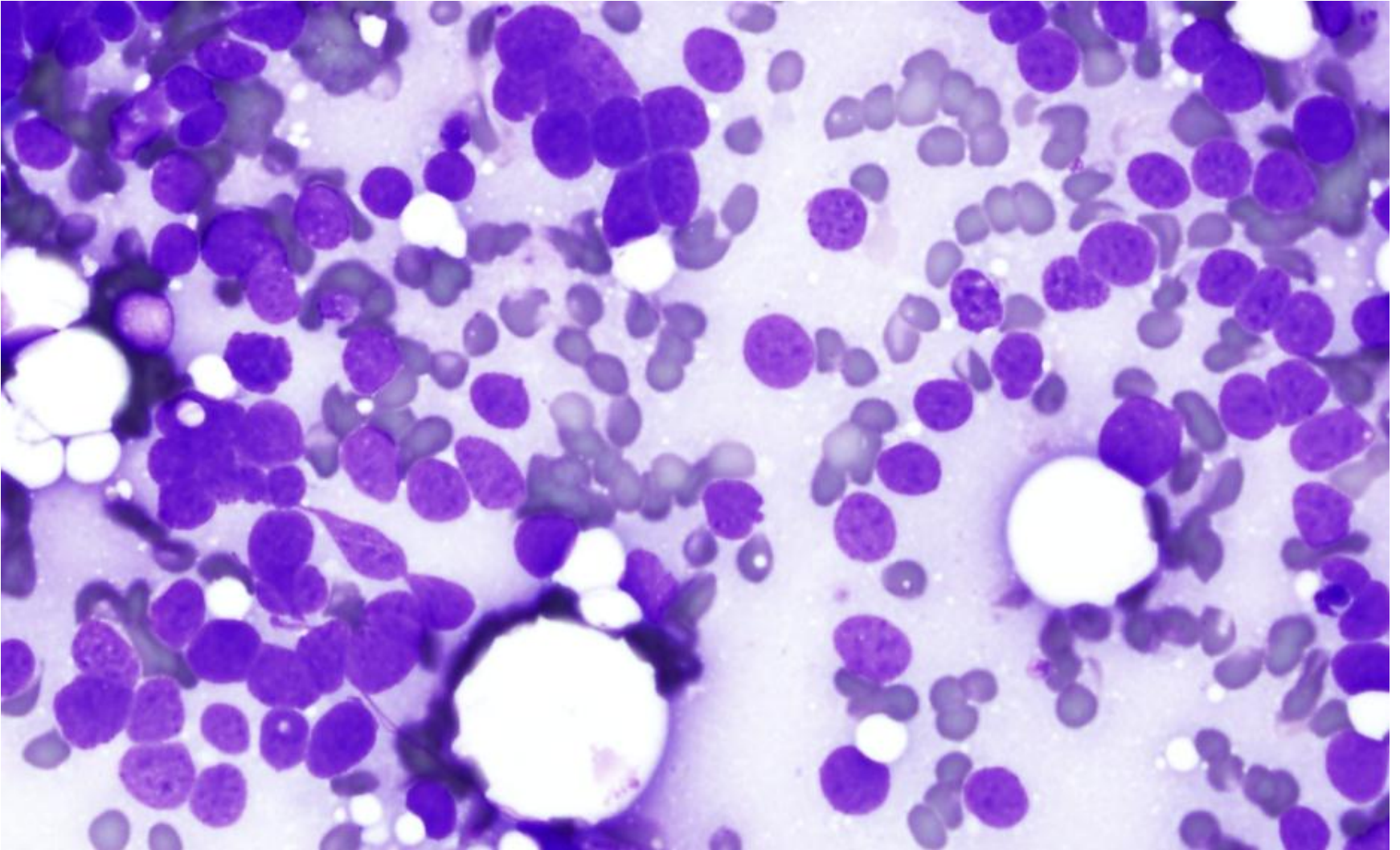
---





# Diff-Quik

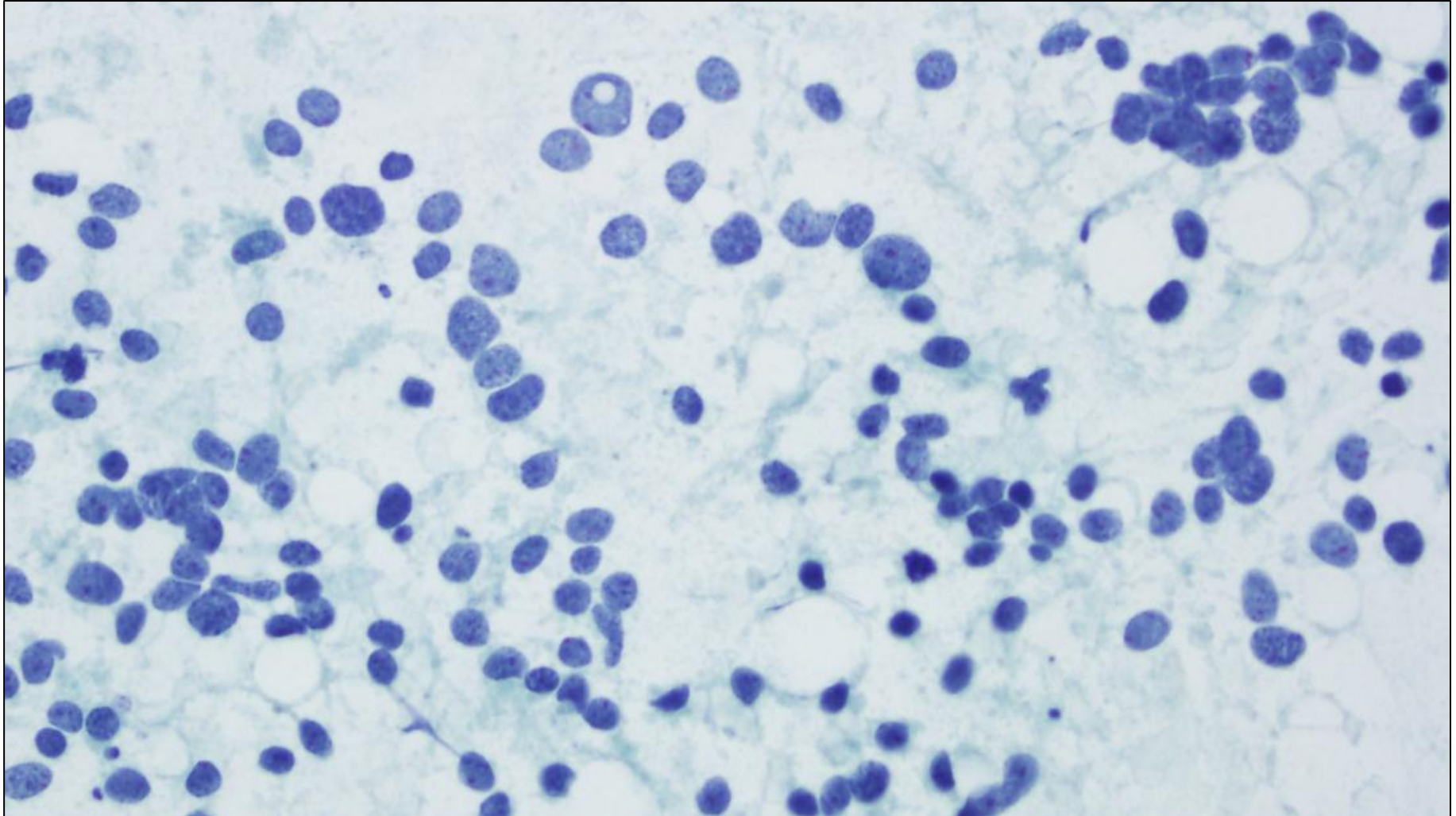
---



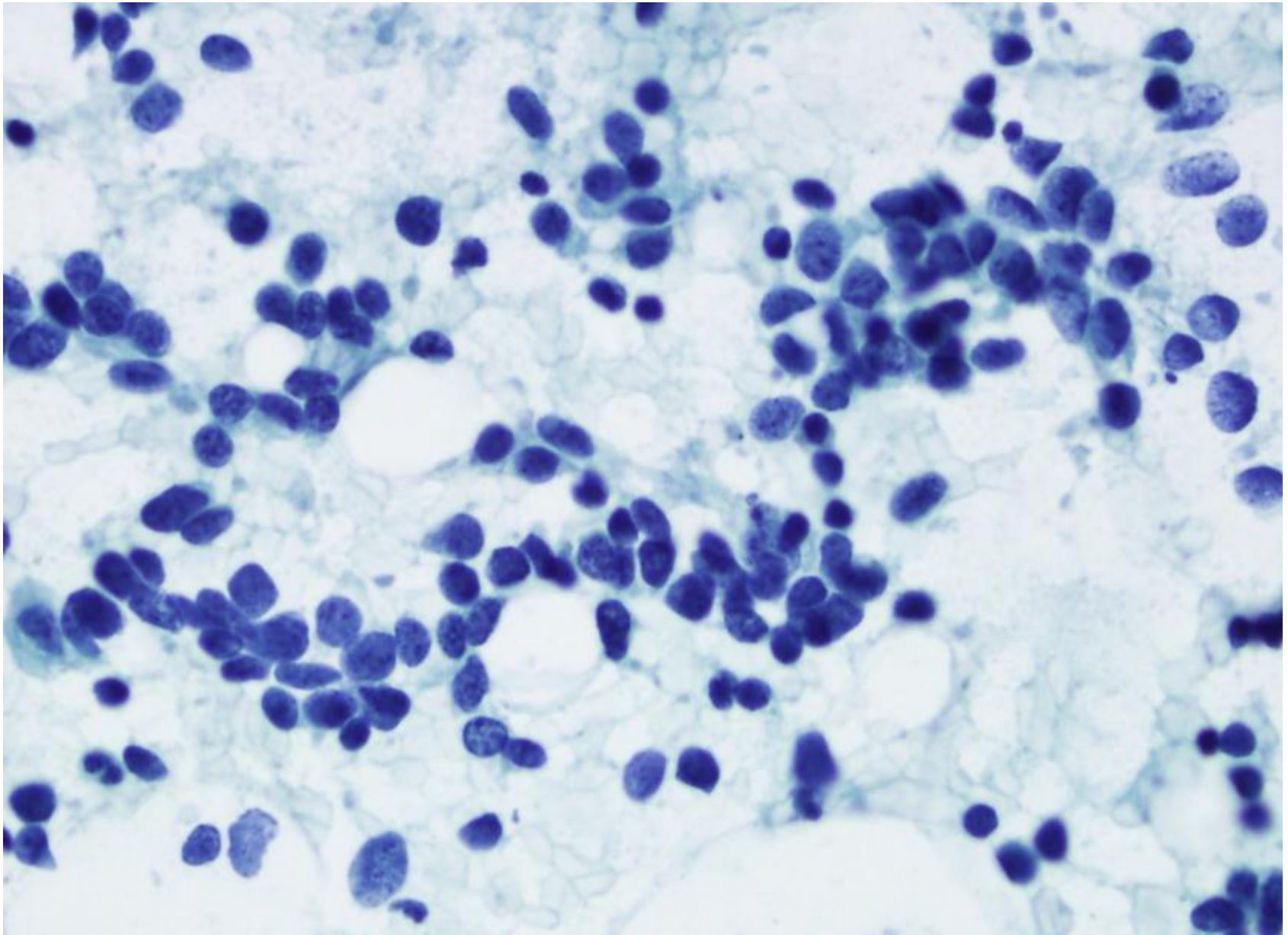


# Pap stain

---



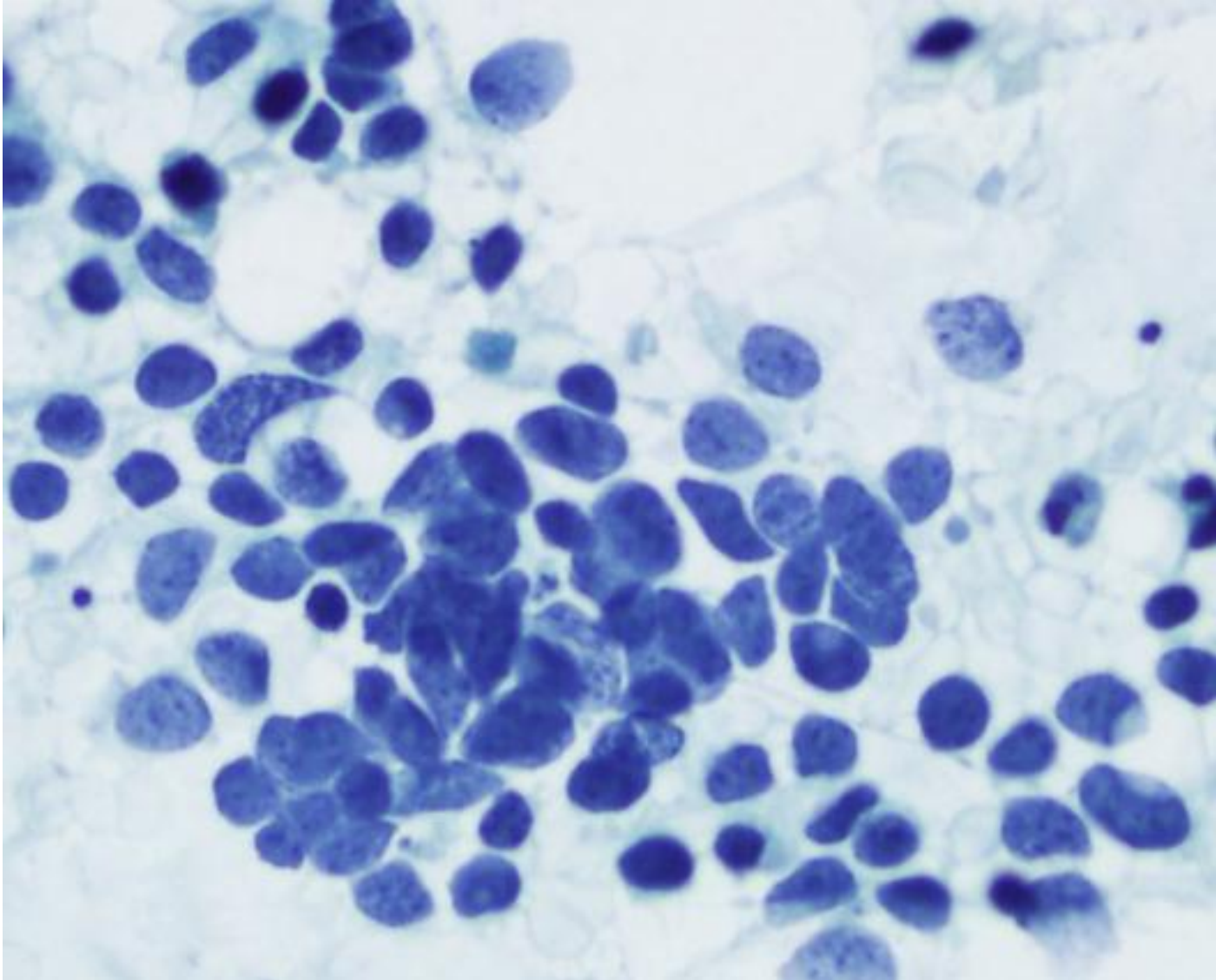
# Pap stain





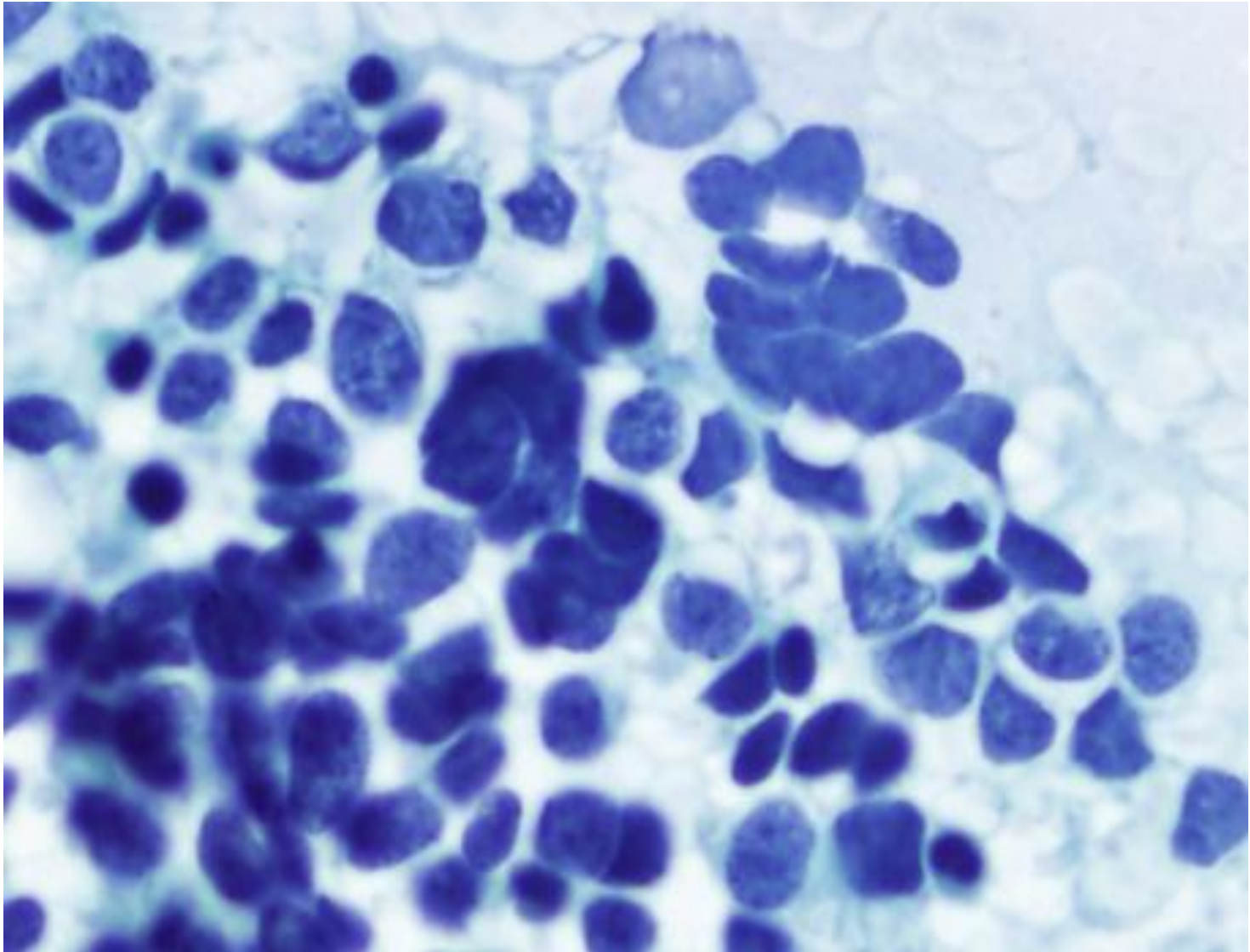
# Pap stain

---



# Pap stain

---





# DIFFERENTIAL DIAGNOSIS

---

- Reactive lymph node
- Lymphoma
- Poorly differentiated carcinoma
- Small cell carcinoma
- Merkel cell carcinoma

What is the history?

- Breast cancer - small cell carcinoma
  - Received neoadjuvant chemotherapy, modified radical mastectomy and axillary lymph node dissection, then subsequent radiation

# FINAL DIAGNOSIS

---

- Right supraclavicular lymph node, FNA:
  - Positive for metastatic small cell carcinoma.